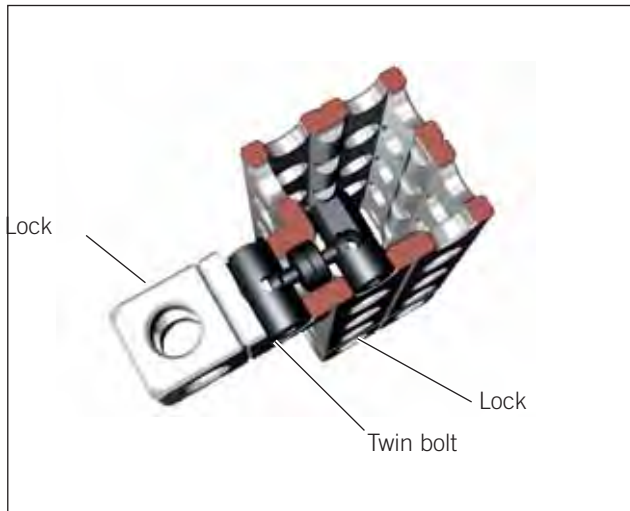


ALUFIX CLASSIC

Connection Elements

A variety of elements allows combination of Alufix components whenever two opposite holes, or a hole and a nub are to be connected. This works also between different system sizes using reducer sleeves.



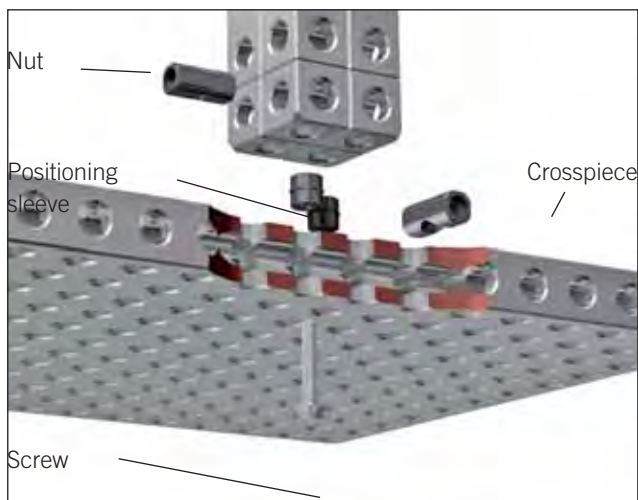
Quick connection

For fast, constantly changing fixtures we recommend using quick connection elements.

A twin bolt is positioned between Alufix elements to be connected. An excentric slot on the lock slides round and grips the head of a twin bolt resulting in a tight connection.

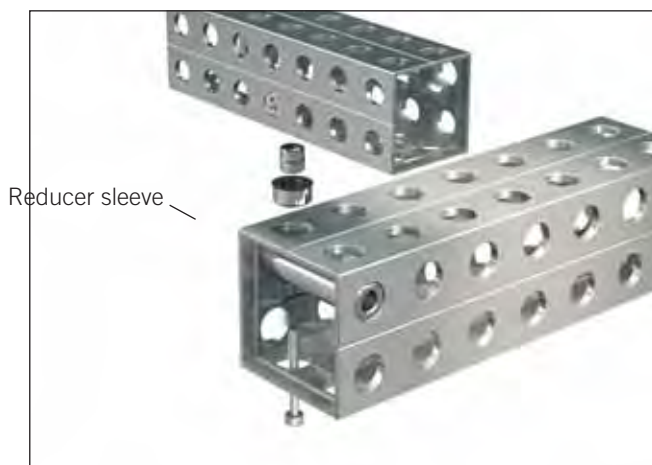


Recommended torque must be adhered to otherwise head of twin bolt may be damaged.



Screw connection

For lasting tight connections the screw connection has proved to be the best.



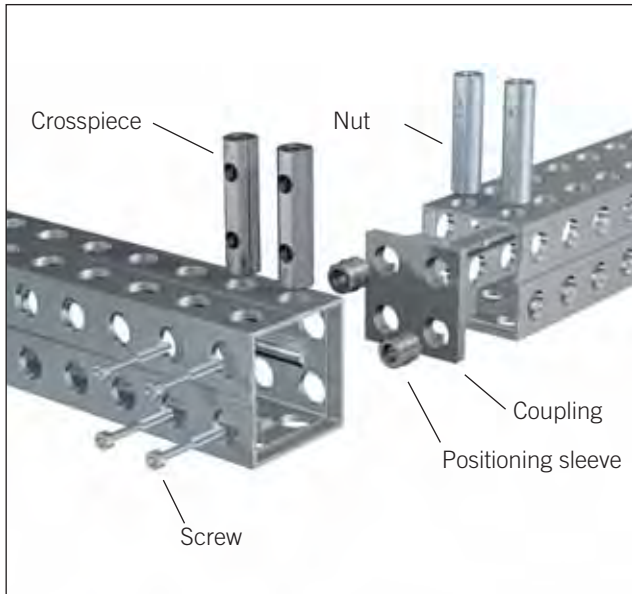
Connecting different system sizes

Alufix elements in different system sizes are connected using

- Reducer sleeves
- Reducer bolts

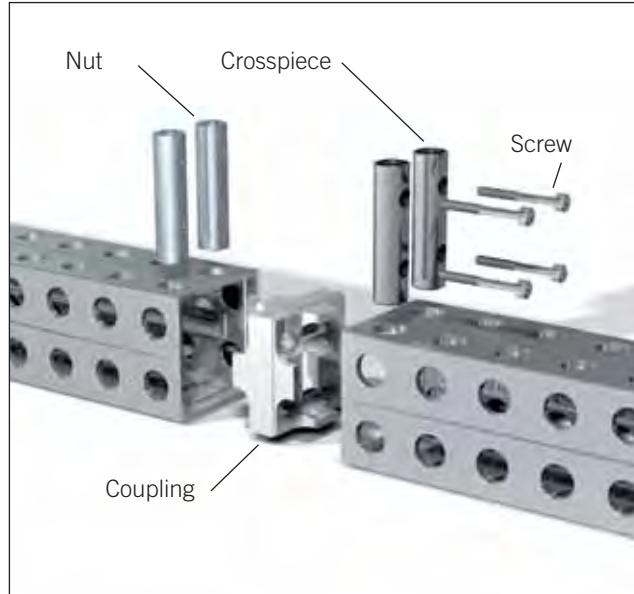


Connecting with couplings



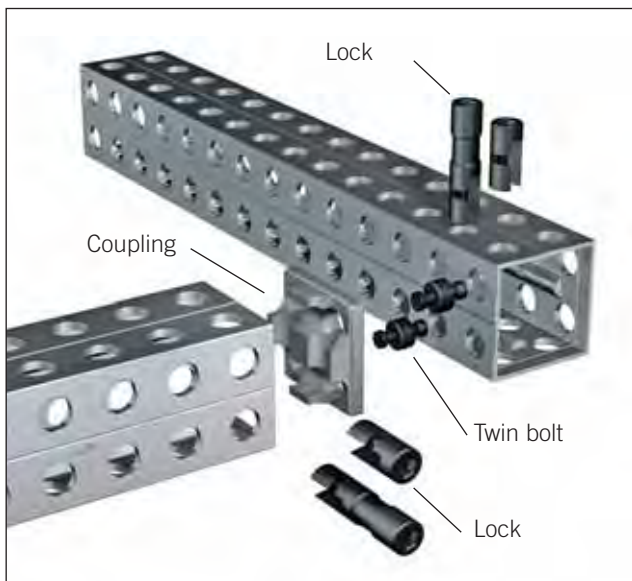
Single coupling with screw connection

is used in face ends of Light bars for accurate positioning of further elements. Picture shows assembly using screw connectors



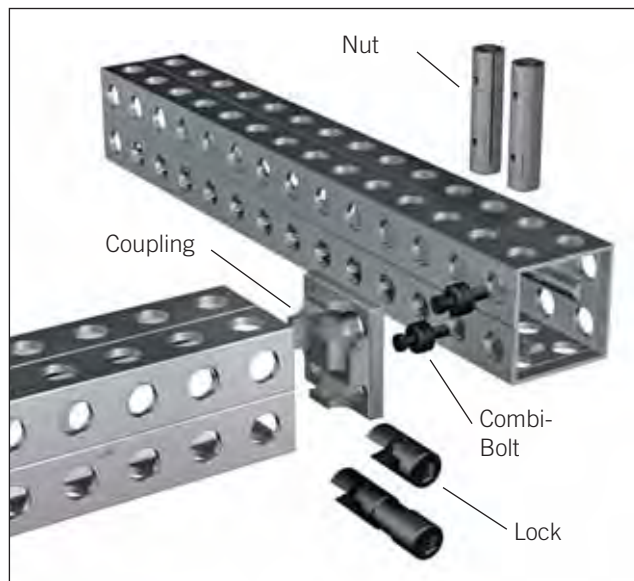
Double coupling with screw connection

is used for centering two Light bars end to end. Picture shows assembly using screw connectors, quick connectors are also possible.



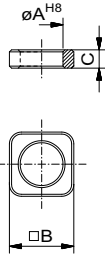
Single coupling with quick connection

is used in face ends of Light bars for accurate positioning of further elements. Picture shows assembly using quick connectors



Single coupling with screw/quick connection (combi bolt)

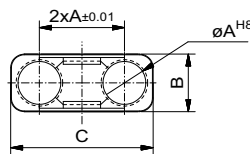
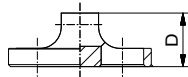
is used for centering two Light bars end to end. Picture shows assembly using screw and quick connectors.



Coupling, single

for 1 row bar

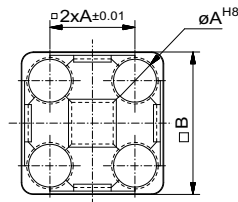
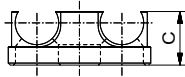
Nr.	System	A	B	C	
23315	AF 25	12,5	19	5,4	4
20794	AF 40	20	32	8,4	16
26930	AF 50	25	32	10,9	29



Coupling, single

for rectangular bar

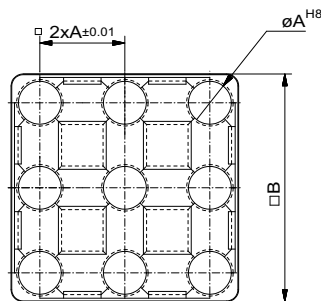
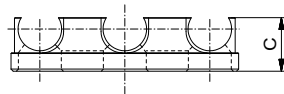
Nr.	System	A	B	C	D	
55134	AF 25	12,5	17	42	16	10
57211	AF 40	20	32	68	25	50



Coupling, single

for 2 row bar

Nr.	System	A	B	C	
23325	AF 25	12,5	42	16	26
20792	AF 40	20	68	25	120
26727	AF 50	25	84	32	228



Coupling, single

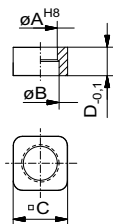
for 3 row bar

Nr.	System	A	B	C	
23612	AF 25	12,5	67	16	79
23613	AF 40	20	108	25	333
26853	AF 50	25	134	32	670

Coupling, double

for 1 row bar

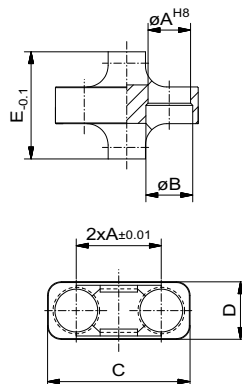
Nr.	System	A	B	C	D	
23320	AF 25	12,5	13,8	19	10,8	8
20793	AF 40	20	22	32	16,8	31
26931	AF 50	25	27,4	32	21,8	38



Coupling, double

for rectangular bar

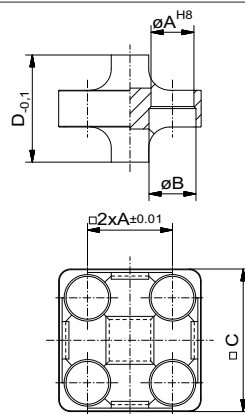
Nr.	System	A	B	C	D	E	
55316	AF 25	12,5	13,8	42	17	31,5	40
57212	AF 40	20	22	68	32	50	110



Coupling, double

for 2 row bar

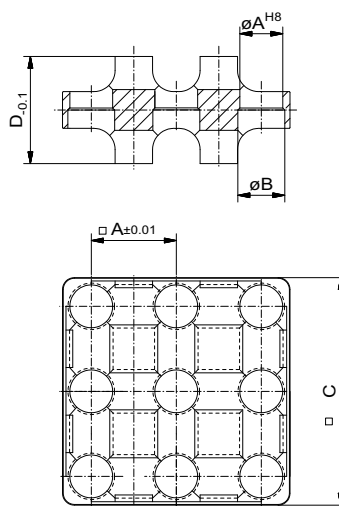
Nr.	System	A	B	C	D	
23330	AF 25	12,5	13,8	42	31,5	53
20791	AF 40	20	22	68	50,4	240
26850	AF 50	25	27,4	84	64	465



Coupling, double

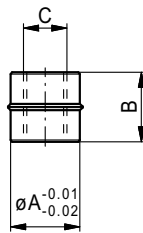
for 3 row bar

Nr.	System	A	B	C	D	
23615	AF 25	12,5	13,8	67	31,5	155
23616	AF 40	20	22	108	50,4	682
26851	AF 50	25	27,4	134	64	1.394



ALUFIX CLASSIC elements can be anodized in different colours. The colour natural is standard, black (-1) is available as an alternative. Other colours on request.

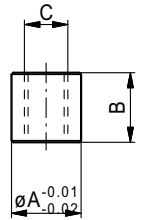
Other versions on request



Positioning sleeve

with collar

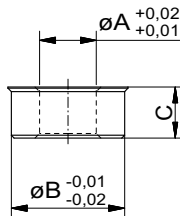
Nr.	System	A	B	C	
21600	AF 16	8	8	M5	1
21385	AF 25	12,5	12	M8	4
21235	AF 40	20	18	M14x1,5	9
26732	AF 50	25	23	M18x1,5	16



Positioning sleeve

plain

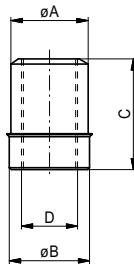
Nr.	System	A	B	C	
21599	AF 16	8	8	M5	1
21386	AF 25	12,5	12	M8	2
21278	AF 40	20	18	M14x1,5	9
26733	AF 50	25	23	M18x1,5	16



Reducer sleeve

with collar

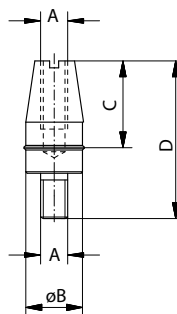
Nr.	System	A	B	C	
21990	25/16	8	12,5	6	1
22129	40/16	8	20	9	3
21236	40/25	12,5	20	9	5
26925	50/25	12,5	25	11	10



Reducer sleeve

with collar

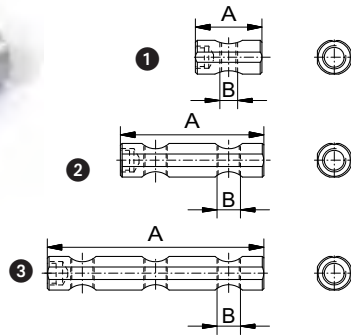
Nr.	System	A	B	C	D	
20684	AF 25	12	12,5	18	M8	4
28260	AF 25	12,5	16	18	M8	9
22934	AF 25	12,5	22	22	M6	24
55904	AF 25	12,5	14	22	M8	42



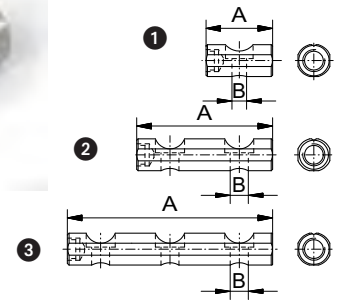
Locating pin

Nr.	System	A	B	C	D	
25914	AF 25	M6	12,5	19,5	35,5	10
22865	AF 25	M6	12,5	19,5	30	10

22865: Version without collar


Crosspiece nut
for screw connection

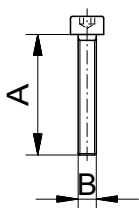
ECO		Classic				
Nr.	#	Nr.	System	B	A	
AF16						
52868	①	80620	16	M3	16	2
52869	①	80621	16	M4	16	2
52870	①	81277	16	M5	16	2
AF25						
52871	①	80533	25	M4	25	5
52872	①	80532	25	M5	25	5
52276	①	80531	25	M6	25	5
52873	①	82815	25	M8	25	5
52874	②	81602	25	M4	50	10
52875	②	81162	25	M5	50	10
52071	②	81168	25	M6	50	10
52876	③	82010	25	M4	75	15
52072	③	81917	25	M6	75	15
AF40						
52877	①	80448	40	M6	40	25
52878	①	80449	40	M8	40	25
31550	①	80450	40	M10	40	25
52879	①	80451	40	M12	40	25
52880	②	81603	40	M6	80	50
52881	②	82806	40	M8	80	50
31552	②	81363	40	M10	80	50
52882	②	82807	40	M12	80	50
52883	③	82011	40	M6	120	75
52884	③	81921	40	M8	120	75
31554	③	81873	40	M10	120	75
52885	③	82808	40	M12	120	75
AF50						
52886	①	82814	50	M6	50	50
52887	①	82813	50	M12	50	50
52888	②	82811	50	M6	100	100
31991	②	82472	50	M12	100	100
52889	③	82812	50	M6	150	150
52075	③	82471	50	M12	150	150


Crosspiece
for screw connection

ECO		Classic				
Nr.	#	Nr.	System	B	A	
AF16						
52890	①	21596	16	3,3	16	2
52891	①	21597	16	4,3	16	2
AF25						
52892	①	21395	25	4,3	25	5
52893	①	21394	25	5,3	25	5
52277	①	21393	25	6,4	25	5
52894	②	23785	25	4,3	50	10
52895	②	22954	25	5,3	50	10
52073	②	22997	25	6,4	50	10
52896	③	25470	25	4,3	75	15
52897	③	28212	25	5,3	75	15
52074	③	25100	25	6,4	75	15
AF40						
52898	①	21229	40	6,4	40	25
52899	①	21230	40	8,5	40	25
31549	①	21231	40	10,5	40	25
52900	①	21232	40	13	40	25
52901	②	23786	40	6,4	80	50
52902	②	25119	40	8,5	80	50
31551	②	20796	40	10,5	80	50
52903	③	25471	40	6,4	120	75
52904	③	28215	40	8,5	120	75
31553	③	24891	40	10,5	120	75
AF50						
52905	①	27115	50	6,4	50	50
52906	①	26730	50	13	50	50
52907	②	28217	50	6,4	100	100
52908	②	26731	50	13	100	100
52909	③	28218	50	6,4	150	150
52076	③	26827	50	13	150	150

Classic version: Ideal for modular fixturing for fast easy handling
ECO version: Ideal for dedicated fixtures, without wear-reducing helicoil inserts and without threaded hole for positioning rod

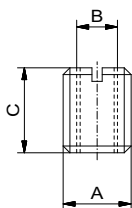




Hex socket head screw

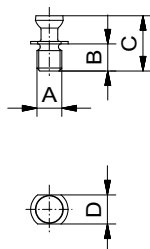
DIN 912 V2A

Nr.	System	A	B	
10706	AF 16	20	M3	1
10707	AF 16	20	M4	2
10526	AF 25	30	M4	3
10525	AF 25	30	M5	3
10524	AF 25	30	M6	8
10475	AF 40	50	M6	12
10476	AF 40	50	M8	24
10477	AF 40	50	M10	38
10478	AF 40	50	M12	53
10867	AF 50	70	M12	68



Reducer bush

Nr.	A	B	C	
26721	M4	M2	5	1
21859	3/8"	M6	13	1
26045	M6	M4	9	1
21514	M8	M4	10	3
23905	M8	M5	10	2
21865	M8	M6	10	2
21477	M10	M4	12,5	5
23906	M10	M5	12,5	4
21866	M10	M6	12,5	7
21867	M10	M8	12,5	10
20584	M12	M4	15	9
22283	M12	M5	15	8
21868	M12	M6	15	7
21869	M12	M8	15	6
21870	M12	M10	15	4
23600	M16	M12	24	13



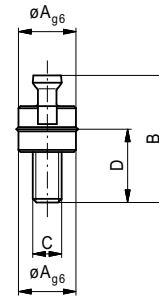
Combi bolt

shortened, for elements with nubs

Nr.	System	A	B	C	D	
20341	AF 16	M4	4,5	8,9	SW5	1
21500	AF 25	M6	6,5	13,3	SW7	2
20347	AF 40	M10	10,5	20,8	SW11	10
26855	AF 50	M12	12	25,9	SW14	16

Combi bolt

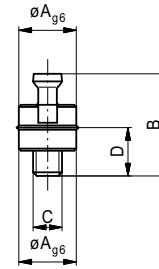
Nr.	System	A	B	C	D	
23249	AF 16	8	17,7	M4	10,2	3
23225	AF 25	12,5	28	M6	16	12
23259	AF 40	20	44	M10	25,5	64
27543	AF 50	25	55,1	M12	32	98



Combi bolt

shortened

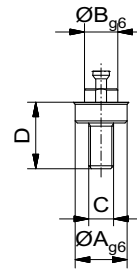
Nr.	System	A	B	C	D	
25742	AF 16	8	14,2	M4	6,7	1
25743	AF 25	12,5	22,4	M6	10,5	10
25744	AF 40	20	23,5	M10	17	61
28176	AF 50	25	44	M12	21	94



Combi reducer bolt

for connecting different system sizes

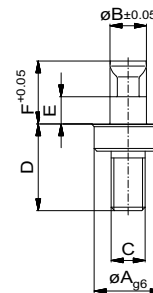
Nr.	System	A	B	C	D	
23620	AF 25/AF 16	12,5	8	M6	16	10
23621	AF 40/AF 25	20	12,5	M10	25,5	33
54400	AF 50/AF 25	25	12,5	M12	32	60
28056	AF 50/AF 40	25	20	M12	32	120



Combi bolt

AF40, for 1D bar and 2D base plate

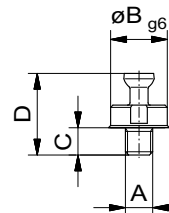
Nr.	System	A	B	C	D	E	F	
25948	AF 25	12,5	6,7	M6	16	5	11,8	24
120510	AF 40	20	10,7	M10	25,5	8	18,5	38



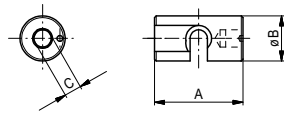
Combi bolt

for grid plate without fitted bore and keyless chuck

Nr.	System	A	B	C	D	
25746	AF16	M4	8	3,5	11	2
25654	AF25	M6	12,5	6	18	10
54587	AF25	1/4"-20	12,5	12	24	10
54589	AF25	3/8"-16	12,5	12	24	12
51843	AF25	M8	12,5	6	18	12
54588	AF25	M8	12,5	12	24	15
25747	AF40	M10	20	808	27,3	40
27821	AF50	M12	25	11	34,1	80
34763	AF50	M12	25	20	43,1	90



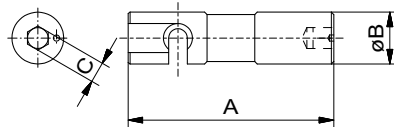
Other versions on request



Lock Alufix

standard lock for quick connection

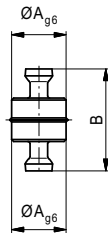
Nr.	System	A	B	C	g
23250	AF 16	16	8	SW3	4
23240	AF 25	25	12,5	SW5	13
23260	AF 40	40	20	SW8	58
26856	AF 50	50	25	SW10	116



Lock Alufix Light

for quick connection of Alufix Light bars

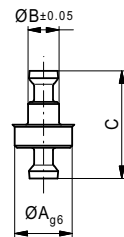
Nr.	System	A	B	C	g
23246	AF 25	50	12,5	SW3	36
20385	AF 40	80	20	SW5	130
26801	AF 50	100	25	SW10	300
27930	AF 50	150	25	SW10	489



Twin bolt

for quick connection

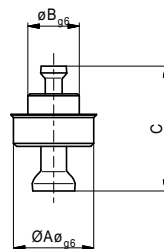
Nr.	System	A	B	g
23247	AF 16	8	15	3
23223	AF 25	12,5	24	12
23257	AF 40	20	37	48
26854	AF 50	25	47	94



Twin bolt

for bar 1D and base plate 2

Nr.	System	A	B	C	g
23248	AF 16	8	4	15	2
23228	AF 25	12,5	6,7	24	8
23258	AF 40	20	10,7	37	34
28208	AF 50	25	13,7	47	70



Reducer bolt

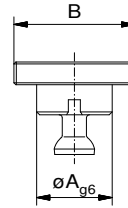
for quick connection

Nr.	System	A	B	C	g
20328	AF 25/AF 16	12,5	8	19,5	8
23452	AF 40/AF 25	20	12,5	30,5	30
28209	AF 50/AF 40	25	20	41,6	38
30580	AF 50/AF 25	25	12,5	35	33

Bolt disk with stud

for quick connection of screw jacks or top sections onto base plates or bars

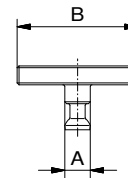
Nr.	System	A	B	g
23646	AF 16	8	12x0,5	5
23252	AF 16	8	24x1	16
23239	AF 25	12,5	24x1	22
23238	AF 25	12,5	32x1	39
23262	AF 40	20	24x1	38
23264	AF 40	20	32x1	58
26926	AF 50	25	32x1	60



Bolt disk 1D/2D

for quick connection of screw jacks or top sections to base plates 2D or bars 1D with long slots

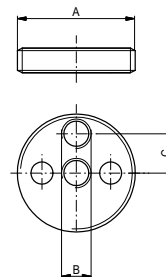
Nr.	System	A	B	g
23647	AF 16	4,3	12x0,5	5
23253	AF 16	4,3	24x1	15
23241	AF 25	6,7	24x1	17
23244	AF 25	6,7	32x1	36
23263	AF 40	10,7	24x1	24
23265	AF 40	10,7	32x1	43

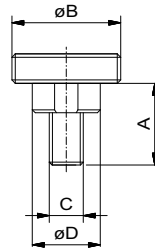


Disk

for set up independent of grid

Nr.	A	B	C	g
21679	M24x1	M6	7	5
21711	M32x1	M6	9	11





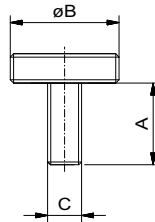
Fixing disk

with stud shoulder

Nr.	System	A	B	C	D	
81587	AF 16	7	12x0,5	M4	8	5
80748	AF 16	10	24x1	M4	8	7
80600	AF 25	15	24x1	M6	12,5	10
80601	AF 25	19	32x1	M6	12,5	17
82822	AF 40	19	24x1	M10	20	28
80602	AF 40	24	24x1	M12	20	30
92900	AF 40	24	32x1	M10	20	32
80603	AF 40	25	32x1	M12	20	34
82827	AF 50	30	32x1	M12	25	45

Fixing disk

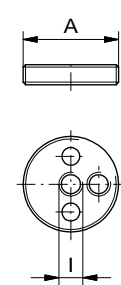
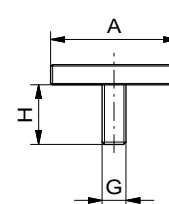
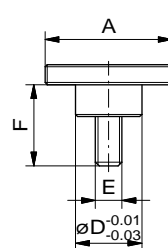
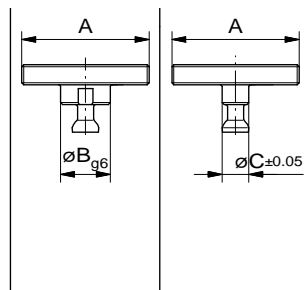
for set up independant of grid



Nr.	System	A	B	C	
81589	AF 16	7,3	12x0,5	M4	5
81489	AF 16	10,2	24x1	M4	10
80597	AF 25	15,3	24x1	M6	8
95905	AF 25	7,7	24x1	1/4"-20	10
95906	AF 25	15	24x1	M8	12
95907	AF 25	7,7	24x1	3/8"-16	11
80598	AF 25	19,6	32x1	M6	15
82770	AF 40	26,2	24x1	M10	10
82771	AF 40	25,7	32x1	M10	20
82772	AF 50	30	24x1	M12	15
82773	AF 50	32	32x1	M12	25

Overview connecting disks for keyless chucks

\varnothing	A	System	#	B	#	C	#	D	E	F	#	G	H	#	I
50	M12x0,5	AF 16	23646	8	23647	4,3	81587	8	M4	7	81589	M4	7,3	52111	M4
50	M12x0,5	AF 25	29580	12,5											
80	M16x1,0	AF 16	52102	8	52106	4,3	93434	8	M4	7	93438	M4	7	52112	M4
80	M16x1,0	AF 25	52103	12,5	52107	6,7	93435	12,5	M6	15	93439	M6	15	21711	M6
125	M32x1,0	AF 25	23238	12,5	23244	6,7	80601	12,5	M6	19	80598	M6	19,6	21711	M6
125	M32x1,0	AF 40	23264	20	23265	10,7	92900	20	M10	24	82771	M10	25,7	52114	M10
125	M32x1,0	AF 50	26926	25	52108	13,6	80603	25	M12	25	82773	M12	32	52115	M12
200	M50x1,5	AF 40	52104	20	52109	10,7	93436	20	M10	24	93440	M10	22	52116	M10
200	M50x1,5	AF 50	52105	25	52110	13,6	93437	25	M12	25	93441	M12	30	52117	M12



Connection elements for angle brackets:

Assembly of angle bracket using quick connectors:

Bolt #25165

Angle bracket #25104



...using screw connectors:

Screw #10002

Positioning sleeve #25038

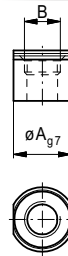
Angle bracket #25104



Positioning sleeve

for angle bracket, one sided

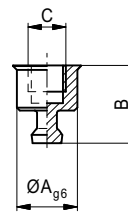
Nr.	System	A	B	
25108	AF 16	8	M5	1
25038	AF 25	12,5	M8	2
25109	AF 40	20	M14	8
26737	AF 50	25	20	



Bolt

for angle bracket

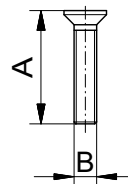
Nr.	System	A	B	C	
25165	AF 16	8	10,3	M5	2
25166	AF 25	12,5	16,5	M8	16
25167	AF 40	20	26,5	M14x1,5	50
26929	AF 50	25	34,5	M18x1,5	60



Countersunk screw

for angle bracket

Nr.	System	A	B	
11210	AF 16	20	M4	2
10002	AF 25	25	M6	2
11193	AF 40	30	M10	8
11500	AF 50	50	M12	14



Connection elements for swivel arm with joint:

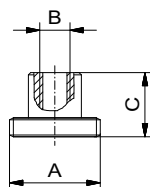
Fixing disk #25342

Reducer bush #21865

Nut M6

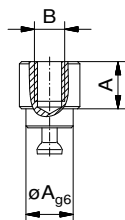
Nut M8

Bolt #25343



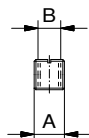
Fixing disk for swivel arm

Nr.	A	B	C	
25342	M24 x 1	M8	17	10



Bolt for swivel arm

Nr.	System	A	B	
25343	AF 25	12,5	M8	21



Reducer bush for swivel arm

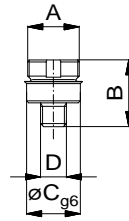
Nr.	A	B	
21865	M8	M6	1

Connection elements for keyless chucks and rotary plates

Fixing disk

for keyless chuck / screw-jack

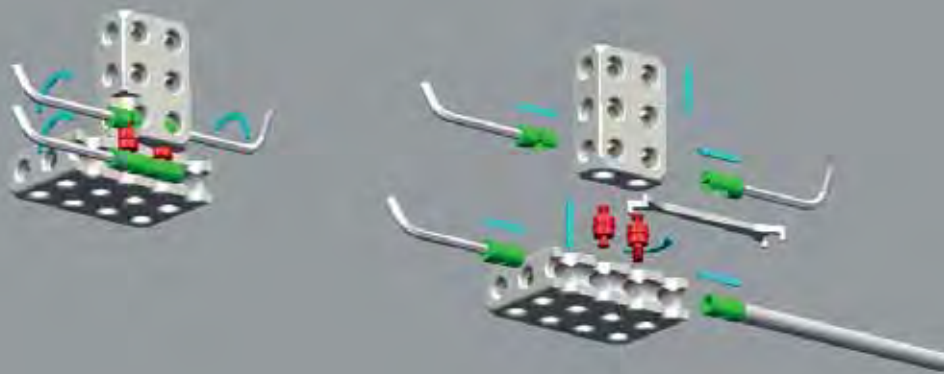
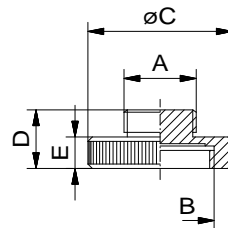
Nr.	A	B	C	D	
56118	M12x0,5	15,5	12,5	M6	19
56163	M16x1	15,5	12,5	M6	30

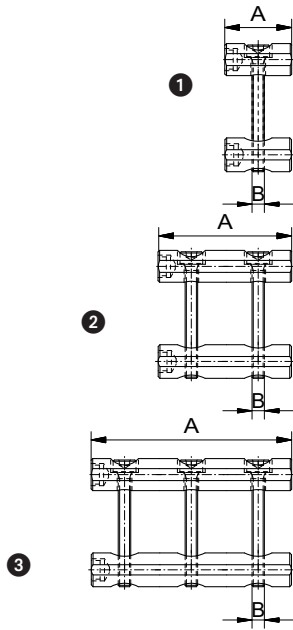


Fixing disk

for keyless chuck / screw-jack

Nr.	für HSF	A	B	C	D	E	
30084	∅ 50	M12x0,5	M24x1	32	13	7	12
30085	∅ 80	M16x1	M24x1	32	13	7	15





Connecting set for screw connection

ECO Classic

Nr.	#	Nr.	System	B	A	g
AF16						
94051	①	80697	16	M3	16	4
94052	①	80698	16	M4	16	14
AF25						
94053	①	80699	25	M4	25	14
94054	①	80700	25	M5	25	15
94055	①	80701	25	M6	25	20
94056	②	81598	25	M4	50	28
94057	②	82233	25	M6	50	30
94058	③	82008	25	M4	75	40
94059	③	81918	25	M6	75	50
AF40						
94060	①	80702	40	M6	40	60
94061	①	80703	40	M8	40	66
94062	①	80704	40	M10	40	85
94063	①	80705	40	M12	40	93
94064	②	81599	40	M6	80	120
94065	②	81520	40	M10	80	176
94066	③	82009	40	M6	120	180
94067	③	81896	40	M10	120	358
AF50						
94068	①	82488	50	M6	50	75
94069	①	82518	50	M12	50	120
94070	②	82489	50	M6	100	150
94071	②	82469	50	M12	100	230
94072	③	82490	50	M6	150	230
94073	③	82470	50	M12	150	350



Picture shows a screw connector with positioning sleeves which fit into Alufix bores



Classic version: Ideal for modular fixturing for fast easy handling
ECO version: Ideal for dedicated fixtures, without wear reducing helicoil inserts and without threaded hole for positioning rod



Standard thread sizes are printed in **bold** print



Quick connection set, AF 16, small

82672, (36-pcs.), 160g
comprising of:

Nr.	Pcs	Name
23250	20	Lock, short
23247	10	Twin bolt
23249	3	Combi bolt
23252	3	Bolt disk

Quick connection set, AF 25, small

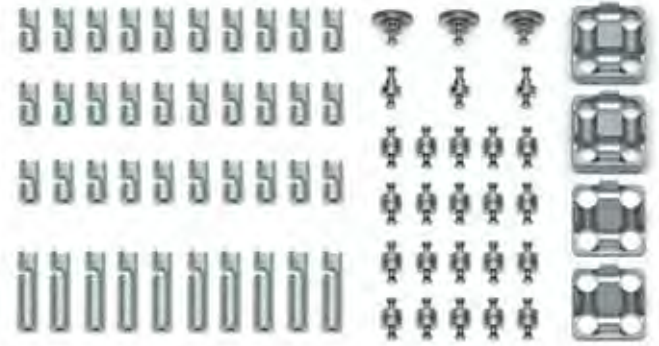
82673, (36-pcs.), 1000g
comprising of:

Nr.	Pcs	Name
23240	20	Lock, short
23223	10	Twin bolt
23225	3	Combi bolt
23239	3	Bolt disk

Quick connection set, AF 40, small

82674, (36-pcs.), 2500g
comprising of:

Nr.	Pcs	Name
23260	20	Lock, short
23257	10	Twin bolt
23259	3	Combi bolt
23264	3	Bolt disk



Quick connection set, AF 25, large

81285, (70-pcs.), 1274g
comprising of:

Nr.	Pcs	Name
23240	30	Lock, short
23246	10	Lock, long
23223	20	Twin bolt
23228	3	Bolt for bar 1D
23239	3	Bolt disk
23330	2	Coupling, double
23325	2	Coupling, single

Quick connection set, AF 40, large

81516, (70-pcs.), 5020g
comprising of:

Nr.	Pcs	Name
23260	30	Lock, short
20385	10	Lock, long
23257	20	Twin bolt
23258	3	Bolt for bar 1D
23262	3	Bolt disk
20791	2	Coupling, double
20792	2	Coupling, single

Quick connection set, AF 50, large

82801, (70-tlg.), 9600g
comprising of:

Nr.	Pcs	Name
26856	30	Lock, short
26801	10	Lock, long
26854	20	Twin bolt
28208	3	Bolt for bar 1D
26926	3	Bolt disk
26850	2	Coupling, double
26727	2	Coupling, single



ALUFIX

Tools

Alufix tool sets comprise of high quality components and are ideal for using with Alufix connecting elements.



#81492 Tools

Alufix 16 (5-pcs), comprising of:

Nr.	St.	Name
80622	1	Positioning rod
81175	1	Extended hex key WAF 3
54902	1	Pin spanner 14/17
81118	2	Key for knurled profiles 32/42



#81493 Tools

Alufix 25 (10-pcs), comprising of:

Nr.	St.	Name
80534	1	Positioning rod
80520	1	Handle 112,5
80521	2	Extension 150
10523	1	Hex insert bit WAF 3
10522	1	Hex insert bit WAF 4
10521	1	Hex insert bit WAF 5
21820	1	Pin spanner 14/17
81118	2	Key for knurled profiles 32/42



#81494 Tools

Alufix 40 (10-pcs), comprising of:

Nr.	St.	Name
80535	1	Positioning rod
80439	1	Handle 112,5
80435	1	Extension 200
80437	1	Extension 300
10484	1	Hex insert bit WAF 6
10485	1	Hex insert bit WAF 8
10486	1	Hex insert bit WAF 10
21820	1	Pin spanner 14/17
81118	2	Key for knurled profiles 32/42

#82263 Tools

Alufix 50 (10-pcs), comprising of:

Nr.	St.	Name
82551	1	Positioning rod
80439	1	Handle 112,5
80435	1	Extension 200
80437	1	Extension 300
10484	1	Hex insert bit WAF 6
10485	1	Hex insert bit WAF 8
10486	1	Hex insert bit WAF 10
27931	1	Pin spanner 17/23
81118	2	Key for knurled profiles 32/42



Torque wrench

with adjustable torque incl. hex key
and 3, 4 and 5 mm bits

Nr.	System	maximum torque
82840	AF 16	3N/m
98022	AF 25	5N/m



! In order to guarantee function of the quick connectors, recommended torque should not be exceeded.

Adjust torque
with hex key



Torque wrench

with pre-set torque

Nr.	System	maximum torque
82099	AF 40	25N/m
82789	AF 50	30N/m

! In order to guarantee function of the quick connectors, recommended torque should not be exceeded.



i Tools also available separately