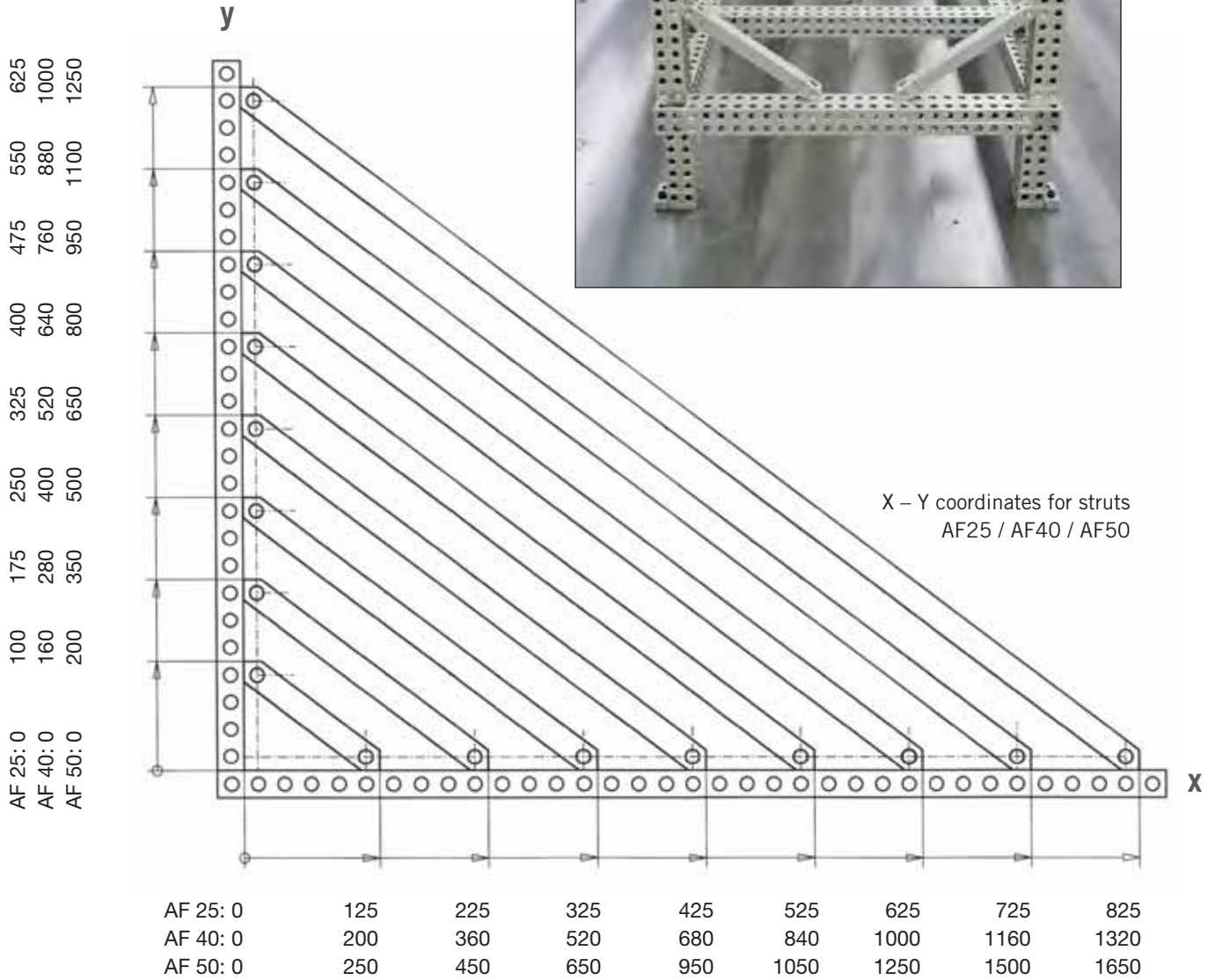




# ALUFIX CLASSIC Struts



**AF25 CLASSIC**

Strut, 25x25

Grid 25, hole diameter 12,5mm

Nr.	A	B	g
81443	125	25	168
81444	250	25	285
81445	375	25	402
81327	500	25	518
81328	625	25	641
81329	750	25	752
81330	875	25	872
81331	1000	25	979

**AF40 CLASSIC**

Strut, 40x40

Grid 40, hole diameter 20mm

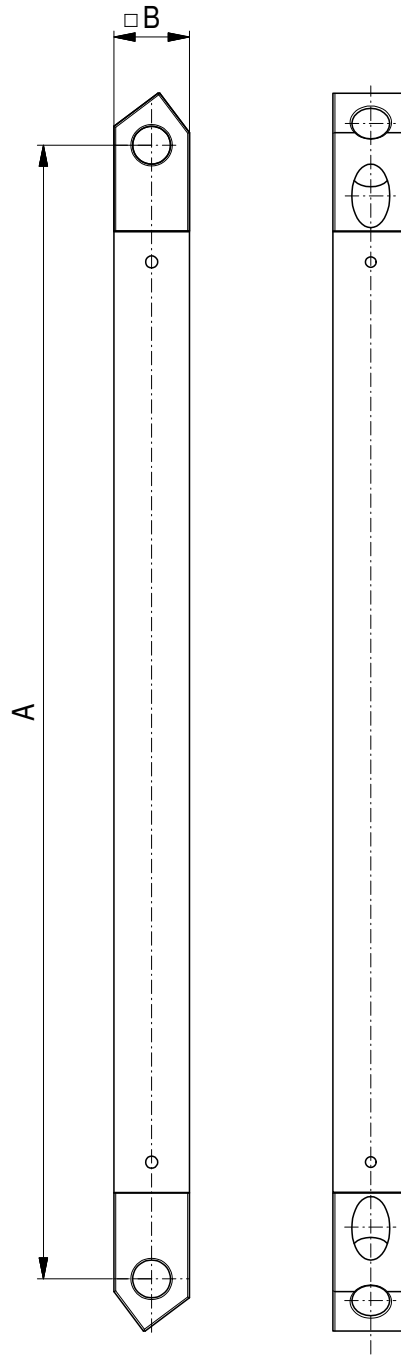
Nr.	A	B	g
81446	200	40	700
81447	400	40	1.226
81448	600	40	1.400
81407	800	40	2.258
81408	1000	40	2.240
81409	1200	40	3.161
81410	1400	40	3.470
81411	1600	40	4.170

**AF50 CLASSIC**

Strut, 50x50

Grid 50, hole diameter 25mm

Nr.	A	B	g
82403	250	50	1.424
82404	500	50	2.534
82405	750	50	3.637
82406	1000	50	5.696
82407	1250	50	7.120
82408	1500	50	8.544
82409	1750	50	9.968
82410	2000	50	11.392

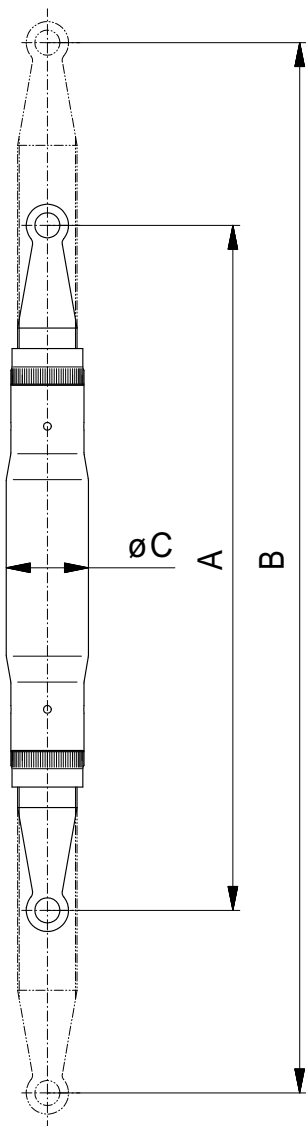


**ALUFIX CLASSIC** elements can be anodized in different colours. The colour natural is standard, black (-1) is available as an alternative. Other colours on request.

## Universal Struts

Witte universal struts comprising of strut tips and tubes are easy and quick to assemble because of angle and strut lengths which are both variable.

The strut tips can also be used in any grid point of systems (Alufix Classic 25 / 40 / 50).



## Universal struts

### System Alufix 25

Nr.	System	C	A - B	g
84937	AF 25	36	460 - 600	256
84938	AF 25	36	620 - 840	1.320
84939	AF 25	36	870 - 1090	1.433
84940	AF 25	36	1120 - 1340	1.745
84941	AF 25	50	1378 - 1570	2.012
84942	AF 25	50	1628 - 1820	3.672
84943	AF 25	50	1878 - 2070	4.172
84944	AF 25	50	2128 - 2320	4.672
84945	AF 25	50	2378 - 2570	5.172
84946	AF 25	50	2628 - 2820	5.672

## Universal struts

### System Alufix 40

Nr.	System	C	A - B	g
84947	AF 40	36	460 - 600	1.042
84897	AF 40	36	620 - 840	1.123
84948	AF 40	36	870 - 1090	1.361
84949	AF 40	36	1120 - 1340	1.673
84804	AF 40	50	1378 - 1570	1.940
84806	AF 40	50	1628 - 1820	3.600
84807	AF 40	50	1878 - 2070	4.100
84893	AF 40	50	2128 - 2320	4.600
84894	AF 40	50	2378 - 2570	5.200
84895	AF 40	50	2628 - 2820	5.800

## Universal struts

### System Alufix 50

Nr.	System	C	A - B	g
84950	AF 50	36	460 - 600	1.036
84951	AF 50	36	620 - 840	1.117
84952	AF 50	36	870 - 1090	1.355
84953	AF 50	36	1120 - 1340	1.667
84954	AF 50	50	1378 - 1570	1.934
84955	AF 50	50	1628 - 1820	3.594
84956	AF 50	50	1878 - 2070	4.094
84957	AF 50	50	2128 - 2320	4.594
84958	AF 50	50	2378 - 2570	5.194
84959	AF 50	50	2628 - 2820	5.794



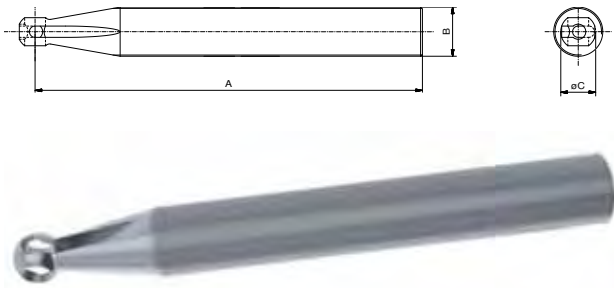
**ALUFIX CLASSIC** elements can be anodized in different colours. The colour natural is standard, black (-1) is available as an alternative. Other colours on request.

Other versions on request

## Strut tip

for universal strut, LH/RH

Nr.	System	A	B	g
31412	AF 25	205	M26x1 LH	326
31413	AF 25	205	M26x1 RH	326
31414	AF 40	205	M26x1 LH	290
31415	AF 40	205	M26x1 RH	290
31416	AF 50	205	M26x1 LH	287
31417	AF 50	205	M26x1 RH	287

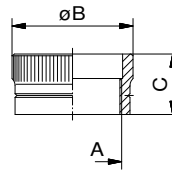


Assembling a universal strut with crosspiece, screw and check nut

## Check nut

for universal strut

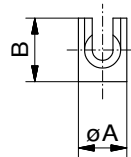
Nr.	System	A	B	C	g
30537	AF 25, 40, 50	M26x1 LH	32	16	10
30538	AF 25, 40, 50	M26x1 RH	32	16	10



## Crosspiece

for universal strut

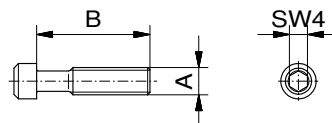
Nr.	System	A	B	g
31418	AF 25	107	14	5
31419	AF 40	17,7	22	19
31420	AF 50	21,7	28	37

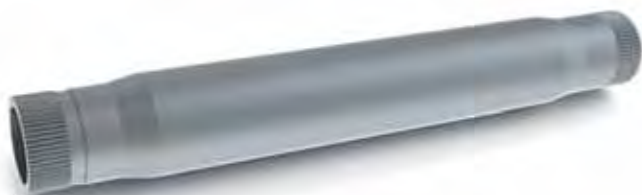


## Screw

for universal strut


Nr.	System	A	B	g
31421	AF 25	M6	25	5
31422	AF 40	M10	35	25
31423	AF 50	M12	46	40






## Strut tube

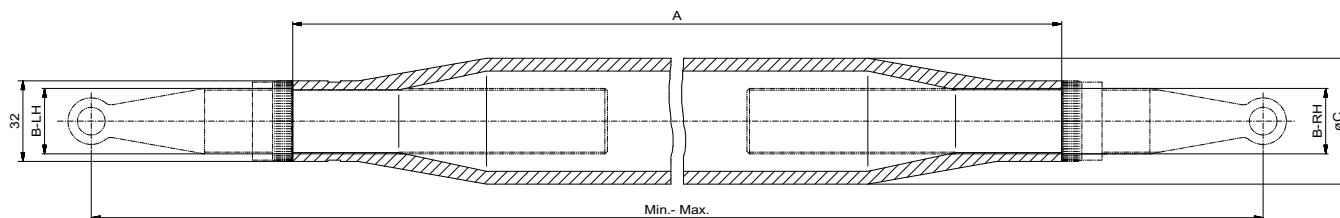
for strut lengths from 400mm to 1620mm

Nr.	A	B	D	f. Min - Max	
30555	250	M26x1	36	400 - 620	249
30532	500	M26x1	36	620 - 870	523
30533	750	M26x1	36	870 - 1120	761
30534	1000	M26x1	36	1120 - 1370	1.073
30556	1250	M26x1	36	1370 - 1620	1.340

## Strut tube

for strut lengths from 1370mm to 2840mm

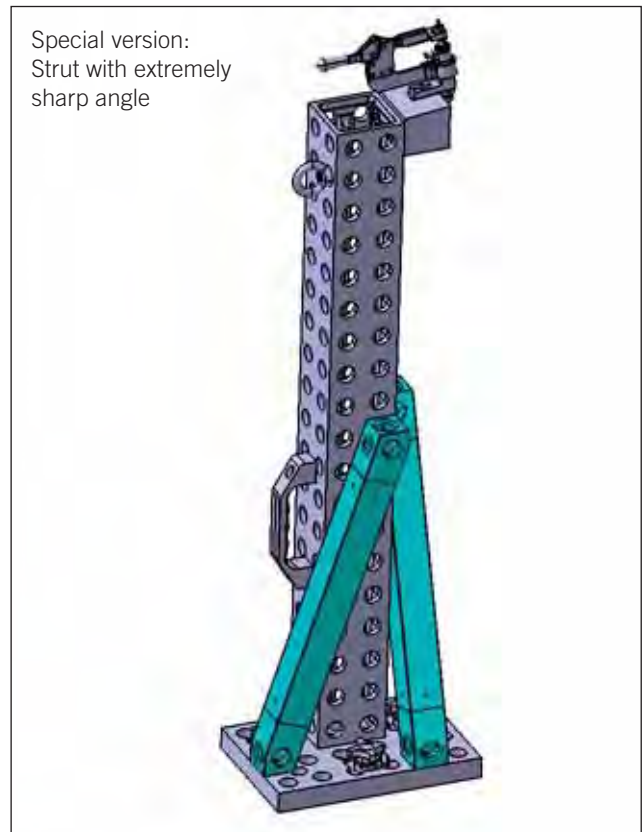
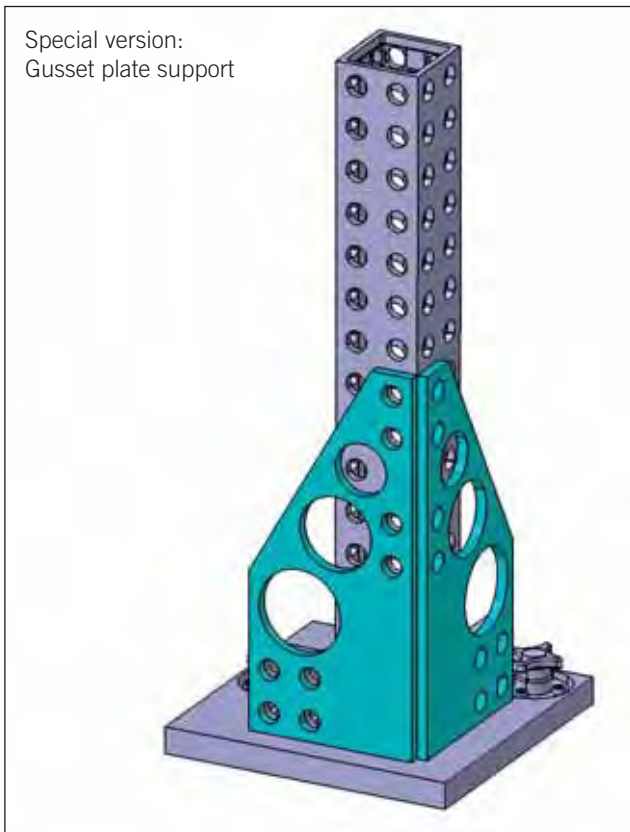
Nr.	A	B	D	f. Min - Max	
31409	1250	M26x1	50	1370 - 1620	2.500
31410	1500	M26x1	50	1620 - 1870	3.000
31411	1750	M26x1	50	1870 - 2120	3.500
31630	2000	M26x1	50	2120 - 2370	4.000
31631	2250	M26x1	50	2370 - 2620	4.500
31632	2500	M26x1	50	2620 - 2840	5.000

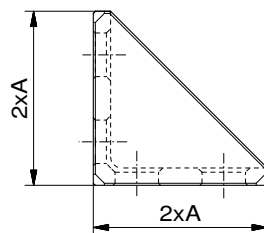
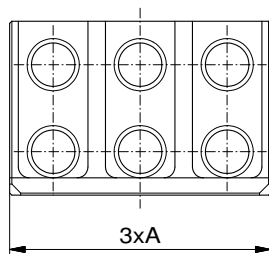
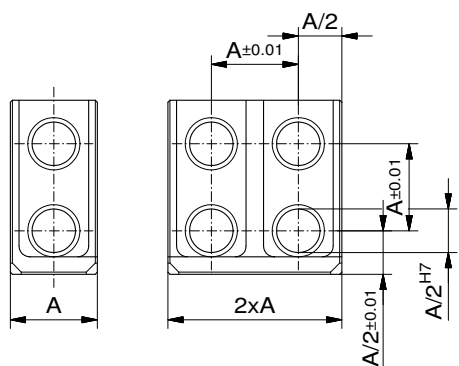


**ALUFIX CLASSIC** elements can be anodized in different colours. The colour natural is standard, black (-1) is available as an alternative. Other colours on request.



Application example: Universal struts used crosswise





## Angle brackets AF 16

Alufix Classic, A=16

Nr.	A	g
25101	1x	10
25102	2x	20
25103	3x	32

## Angle brackets AF 25

Alufix Classic, A=25

Nr.	A	g
25104	1x	165
25035	2x	81
25036	3x	122

## Angle brackets AF 40

Alufix Classic, A=40

Nr.	A	g
25105	1x	730
25106	2x	338
25107	3x	500

## Angle brackets AF 50

Alufix Classic, A=50

Nr.	A	g
26927	1x	324
26736	2x	655
26928	3x	990

Mounting angle bracket  
using quick connector:

Bolt #25165

Angle bracket #25104



Lock # 23240

Mounting angle bracket  
using screw connector:

Screw #10002

Positioning sleeve #25038

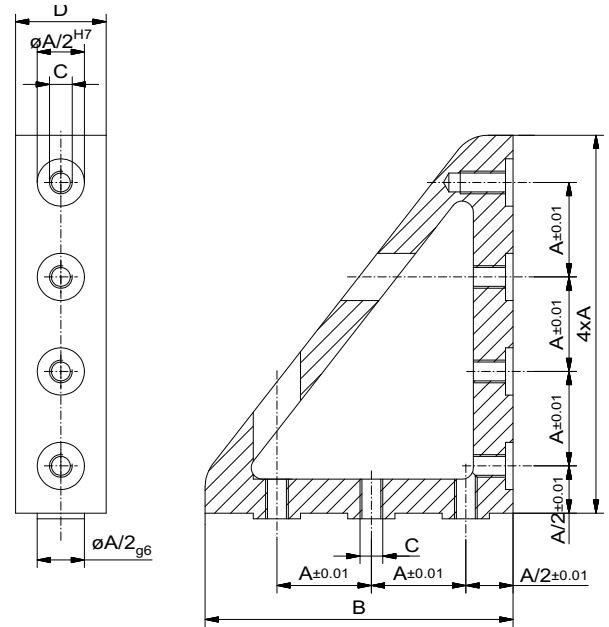
Angle bracket #25104



Nut # 80531

**Profile angle brackets**

Nr.	A (AF)	B	C	D	$\bar{g}$
120511	25	81,5	6	24	194
120514	25	121,5	6	24	319
120512	40	81,5	10	39	315
120515	40	121,5	10	39	518
120513	50	81,5	12	49	396
120516	50	122,5	12	49	651



**i** Profile angle brackets are also available in special lengths of up to 3000mm



**i** **ALUFIX CLASSIC** elements can be anodized in different colours. The colour natural is standard, black (-1) is available as an alternative. Other colours on request.

- More angle brackets: AF ECO, page 196
- Special connection elements are required to assemble angle brackets, they are shown on page 155