

# ALUFIX CLASSIC

## Screw-Jacks and Top Sections

Screw-jacks and top sections provide the contact between workpiece and Alufix fixture. Reliable in grid or off-grid positioning is possible with ball joints, screw-jacks and extensions available in many variations.



Top sections



Joints



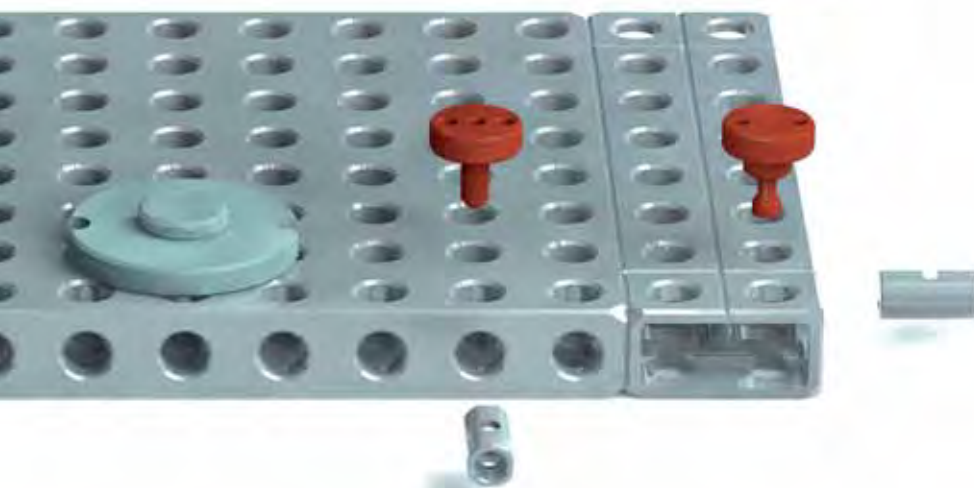
Spacers (screw-jacks, extensions)



Foot plates, connection elements

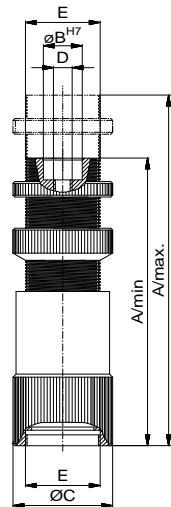


Fixing disks (see pages 153, 154)



**ALUFIX CLASSIC** elements can be anodized in different colours. The colour natural is standard, black (-1) is available as an alternative. Other colours on request.

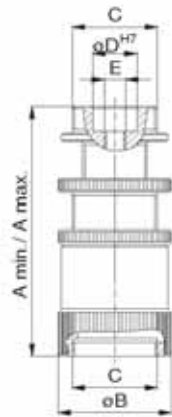




## Screw-jack

with precision thread and check nut

Nr.	A/min	A/max	B	C	D	E	
90614	38	50	8	32	M4	24x1	65
82139	38	50	12,5	32	M6	24x1	65
82033	70	105	12,5	32	M6	24x1	120
82085	110	170	20	42	M10	32x1	330

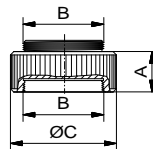
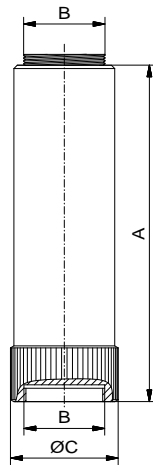


## Screw-jack with anti-turn lock

D32 and D42

Nr.	A min.	A max.	B	C	D	E	
285201	50	70	32	M24x1	12,5	M6	78
285202	70	105	32	M24x1	12,5	M6	120
285203	105	170	42	M32x1	20	M10	310

## Screw-jack extension

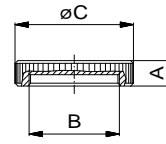


Nr.	A	B	C	
20628	6	M24x1	32	12
23286	12	M24x1	32	25
22856	100	M24x1	32	210
21658	100	M32x1	42	225

## Cap for screw-jack

aluminium or plastic

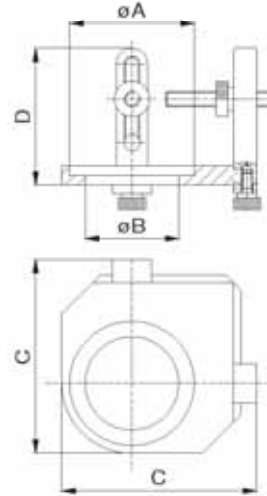
Nr.	Material	A	B	C	
21667	Alu	6,5	M24x1	32	10
21669	Alu	8,5	M32x1	42	18
21666	POM	6,5	M24x1	32	4
21668	POM	8,5	M32x1	42	9



## XY-Stop

for screw-jack

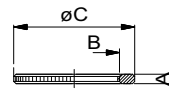
Nr.	A	B	C	D	E	
285204	32	24	50	35	M4	32
285205	42	32	65	46	M5	68



## Ring for screw jack

for use with top sections

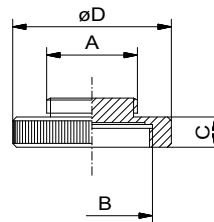
Nr.	A	B	C	
25683	2,5	M24x1	32	2



## Cross over

male/female

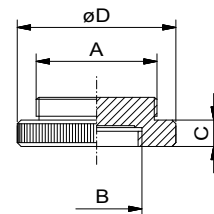
Nr.	A	B	C	D	
21659	M24x1	M32x1	8	42	21



## Cross over

male/female

Nr.	A	B	C	D	
21227	M32x1	M24x1	7	42	32



**ALUFIX CLASSIC** elements can be anodized in different colours. The colour natural is standard, black (-1) is available as an alternative. Other colours on request.

Other dimensions on request



## Material and surface characteristics for top sections

Fixed and spring loaded centres, true line studs, rotating top sections:  
High tensile aluminium  
Hard slide coated

Centres with ball:  
Base in high tensile aluminium,  
balls hardened and polished

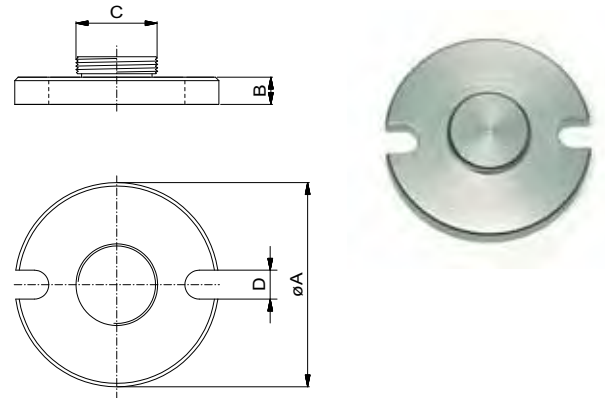
Remaining top sections:  
High tensile aluminium, anodized



## Universal plate

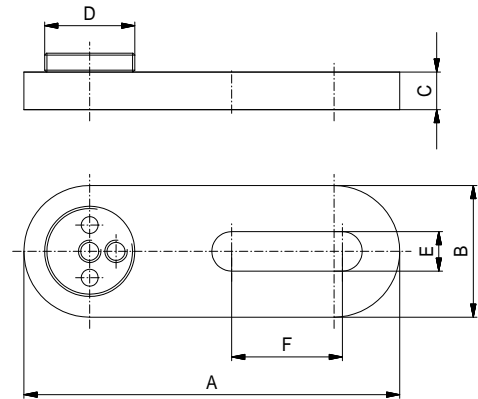
for connection independant of grid

Nr.	A	B	C	D	
21670	60	8	M24x1	8,5	65
21671	75	8	M32x1	8,5	106



## Clamping plate

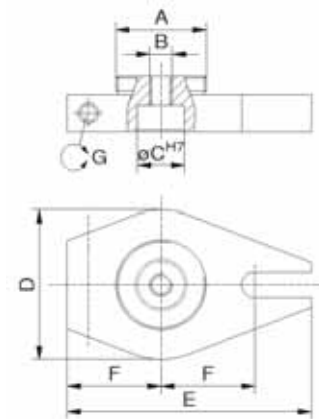
Nr.	A	B	C	D	E	F	
85232	100	35	10	M24x1	10,5	29,5	85



## Footplate

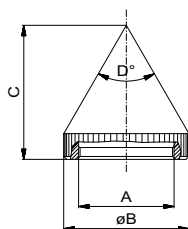
with pivot pin

Nr.	A	B	C	D	E	F	G	
285208	24x1	M6	12,5	40	65	25	6°	50
285209	32x1	M10	20	65	105	40	4°	131



**ALUFIX CLASSIC** elements can be anodized in different colours. The colour natural is standard, black (-1) is available as an alternative. Other colours on request.

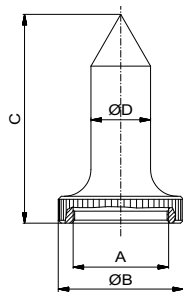
Other dimensions on request



## Center

short

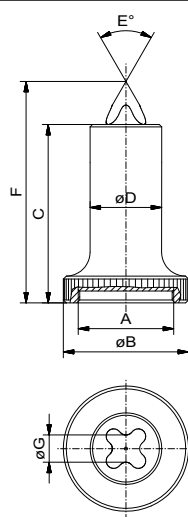
Nr.	A	B	C	D	g
21644	M24x1	32	35	60	30
21645	M32x1	42	45	60	66



## Center

long

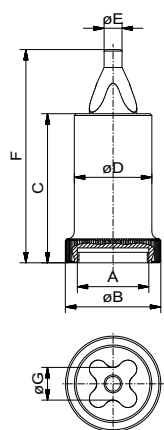
Nr.	A	B	C	D	g
23638	M12x0,5	16	27,5	8	4
21646	M24x1	32	50	12,5	25
21648	M24x1	32	75	12,5	33
21647	M32x1	42	70	20	67
21649	M32x1	42	120	20	106



## Autocenter

spring loaded, star shaped

Nr.	A	B	C	D	E	F	G	min.ø	max.ø	g
95532	24x1	32	50	18	60	61	2	1	10	40



## Autocenter

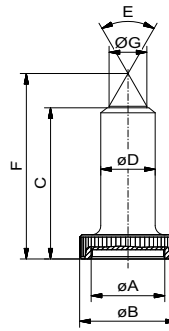
spring loaded, star shaped,  
with check pin

Nr.	A	B	C	D	E	F	G	min.ø	max.ø	g
94543	24x1	32	50	26	6	71,5	11	7	19	120
95531	32x1	42	50	36	16	71,5	16,5	17	29	130

### Autocenter

spring loaded

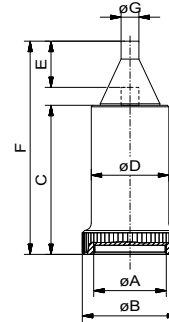
Nr.	A	B	C	D	E	F	G	min.ø	max.ø	
81212	24x1	32	50	18	60	61	12,5	1	10	40



### Autocenter

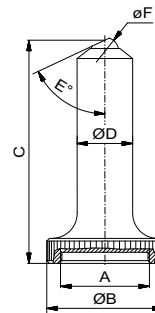
spring loaded, with check pin

Nr.	A	B	C	D	E	F	G	min.ø	max.ø	
82252	24x1	32	50	18	15,5	71,5	6	7	19	60



### True line stud

Nr.	A	B	C	D	E	F	
80590	M24x1	32	32,6	15	65	10	30
80661	M24x1	32	77,6	15	65	10	45
80591	M32x1	42	37,6	20	65	10	36
80666	M32x1	42	122,6	20	65	10	83

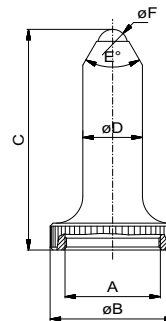


True line studs are also available in polymer (POM, black) on request

### Center

with ball

Nr.	A	B	C	D	E	F	
90545	M24x1	32	34	15	60	10	27
80584	M24x1	32	52	12,5	60	6	21
80585	M24x1	32	53	12,5	60	8	22
80586	M32x1	42	72	20	60	6	60
80587	M32x1	42	73	20	60	8	57
80588	M32x1	42	74	20	60	10	63
80589	M32x1	42	75	20	60	12	60



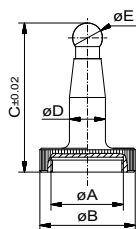
Centers with ball are also available in polymer (POM, black) on request



**ALUFIX CLASSIC** elements can be anodized in different colours. The colour natural is standard, black (-1) is available as an alternative. Other colours on request.

Other dimensions on request

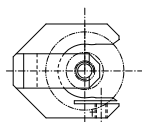
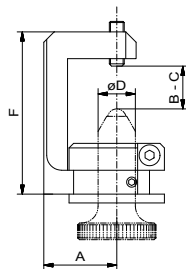




## Centering element

with reference ball

Nr.	A	B	C	D	E	
82142	M24x1	32	50	12	10	27



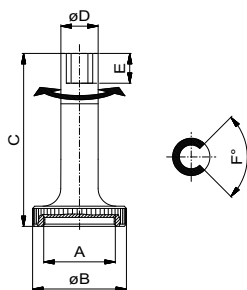
## C clamp

adjustable, without center with ball

Nr.	A	B	C	D	F	
81111	28	0	15	12,5	52	123

## Stop and support 90°

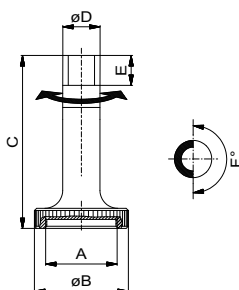
swivel top, fixing screw



Nr.	A	B	C	D	E	F	
81113	M24x1	32	58	12,5	10	90	26

## Stop and support 180°

swivel top, fixing screw

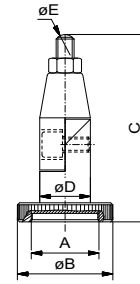


Nr.	A	B	C	D	E	F	
81112	M24x1	32	58	12,5	10	180	27

## Center

with ball and joint

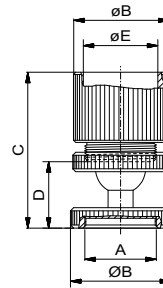
Nr.	A	B	C	D	E	
82174	M24x1	32	57-67	17	6	37



## Magnetic holder

with ball joint

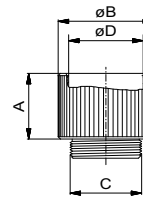
Nr.	A	B	C	D	E	
80941	M24x1	32	52,3	22,2	25	85



## Magnetic holder

without ball joint

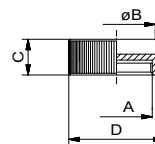
Nr.	A	B	C	D	
80948	22	32	M24x1	25	60



## Moulding cap

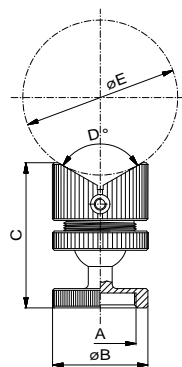
for use with compound resin

Nr.	A	B	C	D	
22005	M24x1	26	12	32	11



**ALUFIX CLASSIC** elements can be anodized in different colours. The colour natural is standard, black (-1) is available as an alternative. Other colours on request.

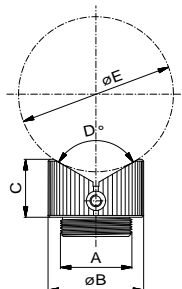
Other dimensions on request



### V block 120°

with ball joint

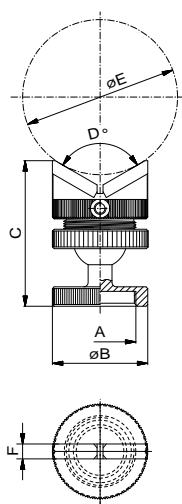
Nr.	A	B	C	D	E	
80733	M24x1	32	49	120	max. 52	58



### V block 120°

without ball joint

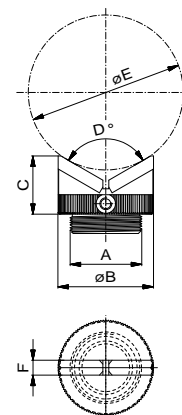
Nr.	A	B	C	D	E	
22286	M24x1	32	19,4	120	max. 52	34



### Knife 120°

with ball joint

Nr.	A	B	C	D	E	F	
80927	M24x1	32	49	120	max. 56	5	42



### Knife 120°

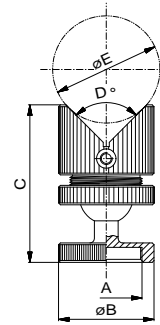
without ball joint

Nr.	A	B	C	D	E	F	
22631	M24x1	32	19,5	120	max. 56	5	19

### V block 90°

with ball joint

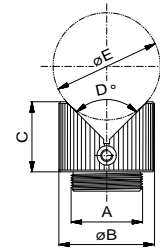
Nr.	A	B	C	D	E	
80725	M24x1	32	53	90	max. 36	61



### V block 90°

without ball joint

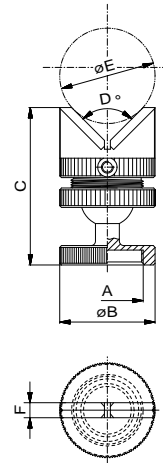
Nr.	A	B	C	D	E	
22285	M24x1	32	23,5	90	max.36	30



### Knife 90°

with ball joint

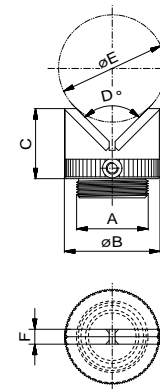
Nr.	A	B	C	D	E	F	
80926	M24x1	32	53	90	max. 32	5	42



### Knife 90°

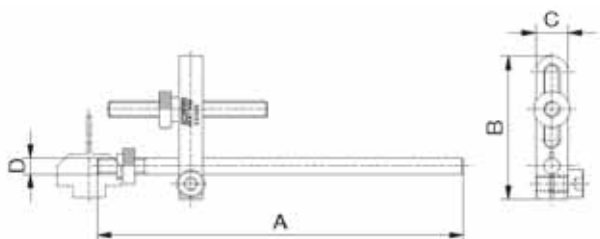
without ball joint

Nr.	A	B	C	D	E	F	
22555	M24x1	32	23,5	90	max. 32	5	19



**ALUFIX CLASSIC** elements can be anodized in different colours. The colour natural is standard, black (-1) is available as an alternative. Other colours on request.

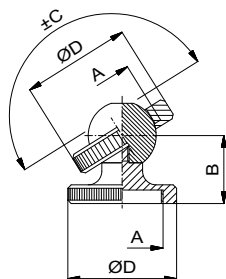
V Blocks are also available in polymer (POM, black) on request



## Stop M4

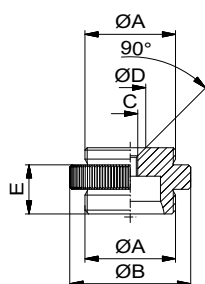
for V-piece

Nr.	A	B	C	D	g
285200	92	36	8	M4	12



## Ball joint

Nr.	A	B	C	D	g
80947	M24x1	22	55°	32	24
81588	M12x0,5	10	55°	16	6



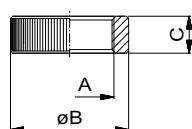
## Crossover

male/male, for ball joint

Nr.	A	B	C	D	E	g
22647	M24x1	32	M4	8,2	13	21
24241	M12x0,5	16	-	-	5	12



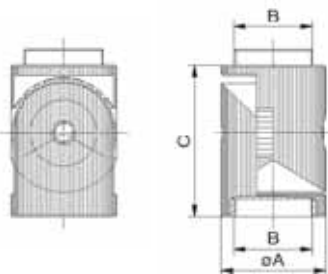
M4 thread can be connected with studs from FX range as location pin



## Spacer

M24x1

Nr.	A	B	C	g
22644	M24x1	ø32	10	10



## Joint for Screw-jacks

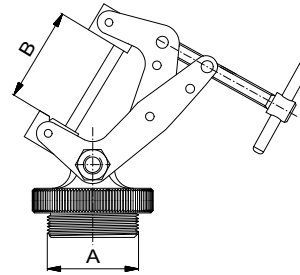
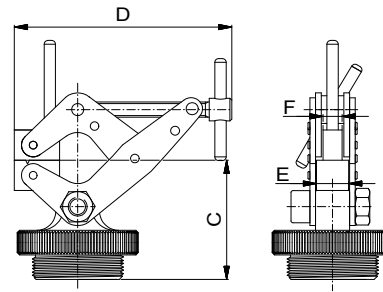
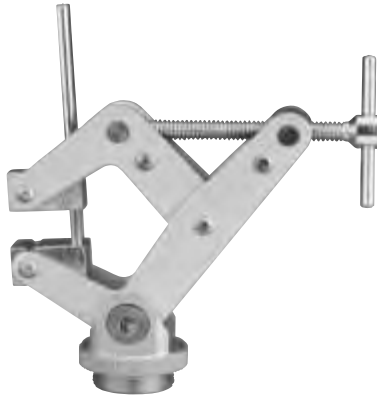
with knurled serrations grid 6° or 4°

Nr.	A	B	C	Grid	g
285206	32	24x1	40	4°	94
285207	42	32x1	60	6°	232

### Screw clamp

with joint, connection thread M24x1

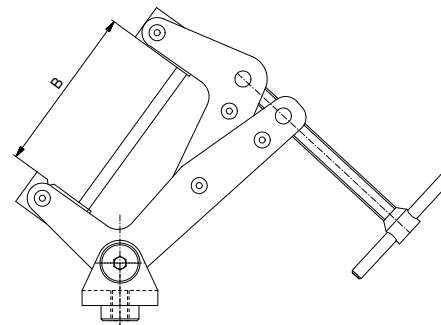
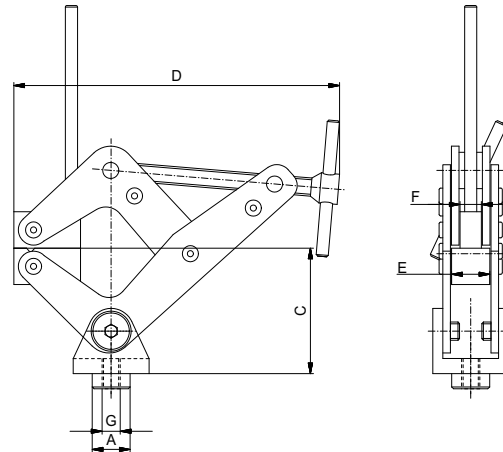
Nr.	A	B	C	D	E	F	
80949	24x1	25	32	57,5	8,5	5	51
81270	24x1	55	47,5	105	12,6	7	152



### Screw clamp

with joint, ALUFIX 25

Nr.	A	B	C	D	E	F	G	
80924	12,5	55	41,3	105	12,6	7	M6	147



**ALUFIX CLASSIC** elements can be anodized in different colours. The colour natural is standard, black (-1) is available as an alternative. Other colours on request.

Other dimensions on request