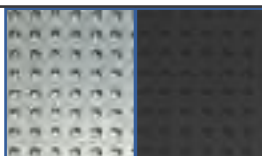


ALUFIX CLASSIC Base Plates



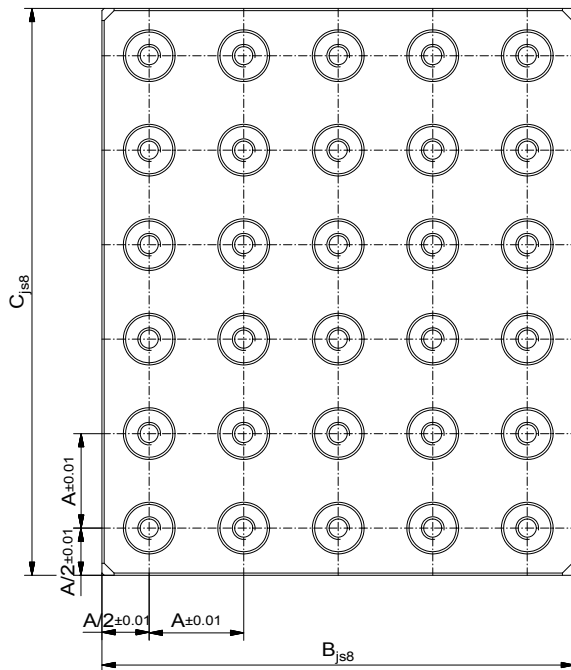
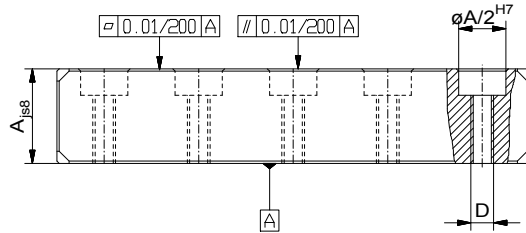
Witte FixBase – Base plates, sandwich plates and cubes are shown on pages 242-268



i **ALUFIX CLASSIC** base plates can be anodized in different colours. The colour natural is standard, black (-1) is available as an alternative. Other colours on request



ALUFIX Grid Base Plates

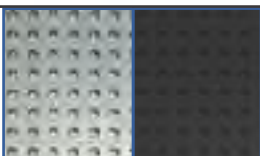


ALUFIX 16, Grid (A) 16, hole diameter 8mm

Nr.	A	B	C	D	g
20640	16	128	256	M4	1.416
20641	16	160	320	M4	2.221
20642	16	192	256	M4	2.123
20643	16	192	384	M4	3.185
20644	16	256	320	M4	3.539
20645	16	256	384	M4	4.247
20646	16	320	320	M4	4.424
20647	16	320	640	M4	8.847
20648	16	384	384	M4	6.370
20649	16	384	512	M4	8.493

ALUFIX 25, Grid (A) 25, hole diameter 12,5mm

Nr.	A	B	C	D	g
20387	25	200	400	M6	5.400
20388	25	250	500	M6	8.438
20403	25	300	400	M6	8.100
20386	25	300	600	M6	11.250
22923	25	400	500	M6	13.500
22925	25	400	600	M6	16.200
20439	25	500	500	M6	16.875
20381	25	500	1000	M6	33.750
20382	25	600	600	M6	24.300
20384	25	600	800	M6	32.400



ALUFIX CLASSIC base plates can be anodized in different colours. The colour natural is standard, black (-1) is available as an alternative. Other colours on request

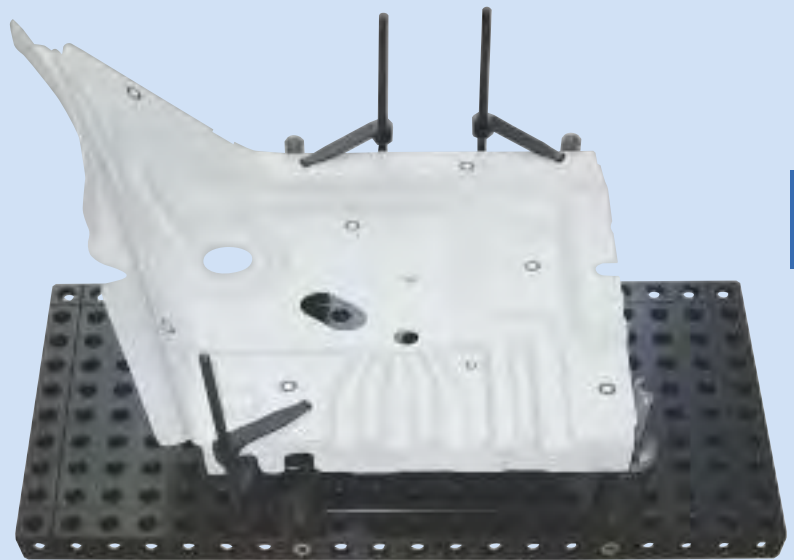
Other dimensions on request

ALUFIX 40,
 Grid (A)40, hole diameter 20mm

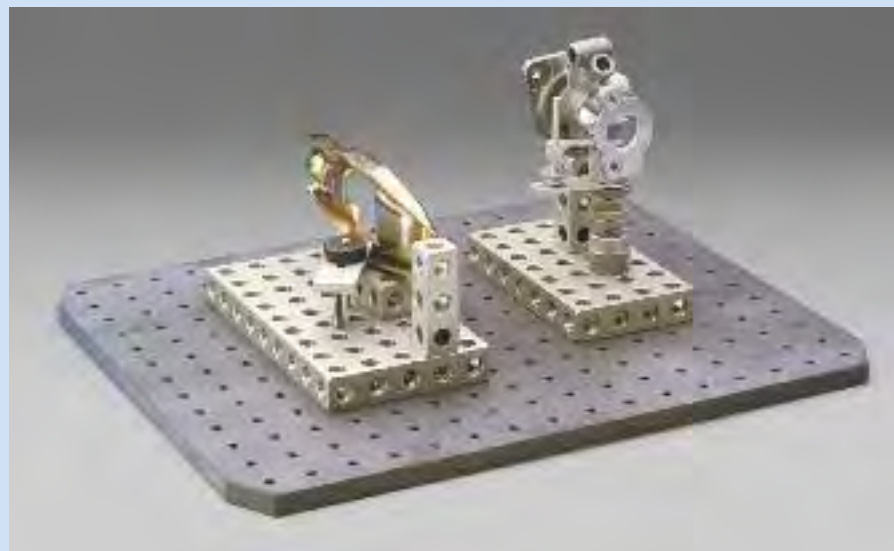
Nr.	A	B	C	D	g
20650	40	320	640	M10	22.118
20651	40	400	800	M10	34.560
20710	40	480	640	M10	33.177
20711	40	480	960	M10	49.766
20713	40	640	800	M10	55.296
20714	40	640	960	M10	66.355
20715	40	800	800	M10	69.120
20808	40	800	1600	M10	138.240
20809	40	960	960	M10	99.533
20810	40	960	1280	M10	132.710

ALUFIX 50,
 Grid (A)50, hole diameter 25mm

Nr.	A	B	C	D	g
28083	50	400	400	M12	21.600
28084	50	500	1000	M12	67.500
28085	50	600	800	M12	64.800
28086	50	600	1200	M12	97.200
28087	50	800	1000	M12	108.000
28088	50	800	1200	M12	129.600
28089	50	1000	1000	M12	135.000
28090	50	1000	2000	M12	270.000
28091	50	1200	1200	M12	194.400
28092	50	1200	1600	M12	259.200



Application examples of Alufix base plates and grid base plates



ALUFIX CLASSIC Full Bars



Alufix full bars are suitable for building small to medium size fixtures as a link between base and workpiece contact point. They can be connected on all 6 sides using quick or screw connection technology and are extremely flexible for all kinds of applications. The sizes listed are standard, other dimensions on request.

AF16 CLASSIC

One row bar 16x16

Grid (A) 16, hole diameter 8mm

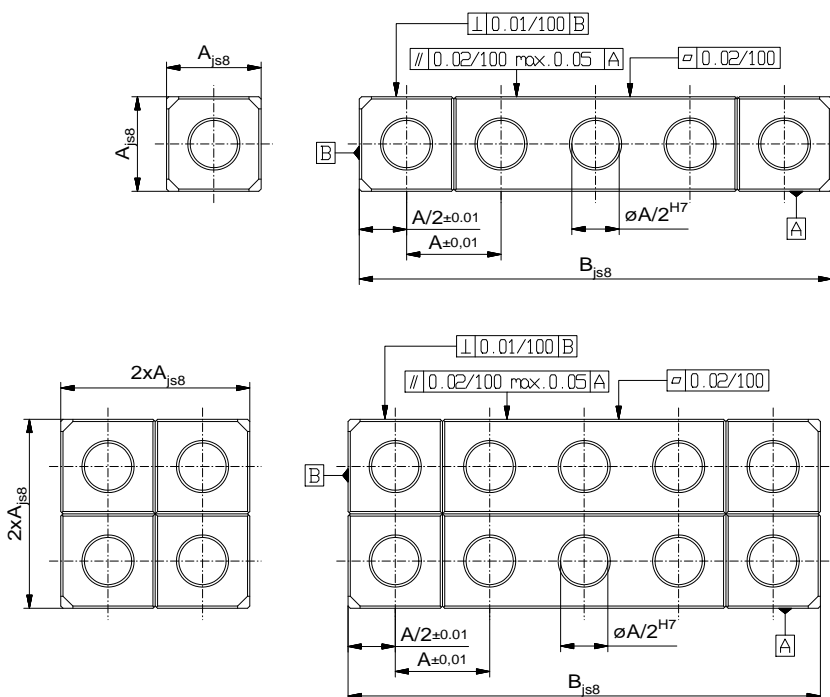
Nr.	B	\bar{g}
21582	16	7
21583	32	14
21584	48	21
21585	64	27
21586	80	33
20654	96	39
20801	128	53
20799	160	66
21587	320	140

AF16 CLASSIC

Two row bar 32x32

Grid (A) 16, hole diameter 8mm

Nr.	B	\bar{g}
21588	32	53
21589	48	79
21590	64	108
21591	80	131
23892	96	160
20812	112	200
20848	128	230
20849	160	268
21592	320	537



AF25 CLASSIC

One row bar 25x25

Grid (A) 25, hole diameter 12,5mm

Nr.	B	g
21372	25	25
21373	50	51
21374	75	76
21375	100	102
21376	125	127
22961	150	152
22963	200	204
22882	250	255
21377	500	510

AF40 CLASSIC

One row bar 40x40

Grid (A) 40, hole diameter 20mm

Nr.	B	g
21273	40	104
21274	80	208
21279	120	404
21275	160	419
21276	200	523
20813	240	628
20815	320	1.098
20814	400	1.046
21304	800	2.947

AF50 CLASSIC

One row bar 50x50

Grid (A) 50, hole diameter 25mm

Nr.	B	g
28177	50	335
28178	100	408
28179	150	613
28180	200	900
28181	250	1.023
28182	300	960
28183	400	1.280
28184	500	2.047
28185	1000	3.200


AF25 CLASSIC

Two row bar 50x50

Grid (A) 25, hole diameter 12,5mm

Nr.	B	g
21378	50	204
21379	75	308
21380	100	410
21381	125	510
22965	150	610
22967	200	819
22883	250	1.025
21382	500	2.020
22634	1000	4.030

AF40 CLASSIC

Two row bar 80x80

Grid (A) 40, hole diameter 20mm

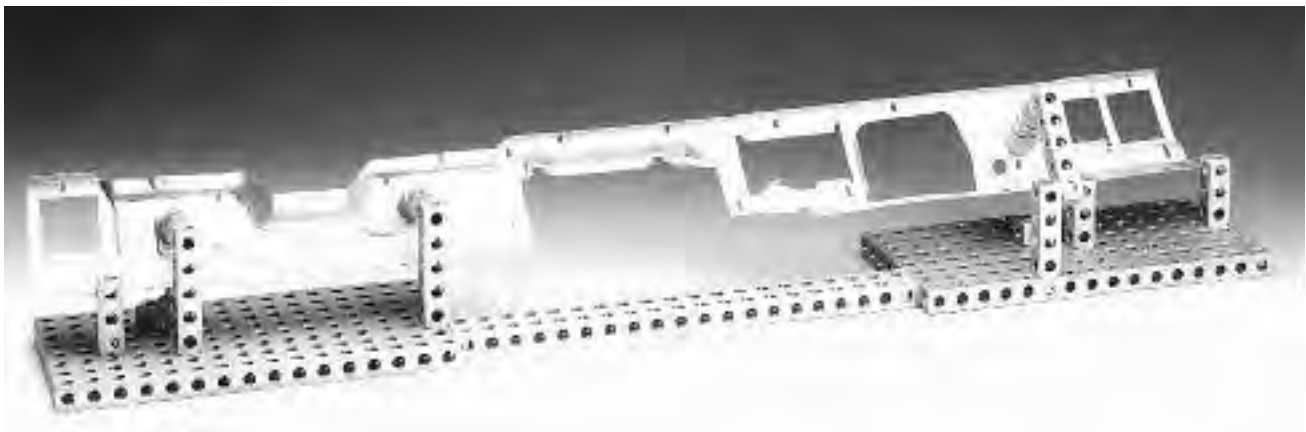
Nr.	B	g
21298	80	840
21299	120	1.257
21300	160	1.682
21301	200	2.080
20817	240	2.511
20818	280	2.900
20434	320	3.357
20435	400	4.150
21302	800	8.411

AF50 CLASSIC

Two row bar 100x100

Grid (A) 50, hole diameter 25mm

Nr.	B	g
28186	100	1.637
28187	150	2.490
28188	200	6.460
28189	250	4.095
28190	300	4.915
28191	400	6.555
28192	500	4.960
28193	1000	9.750

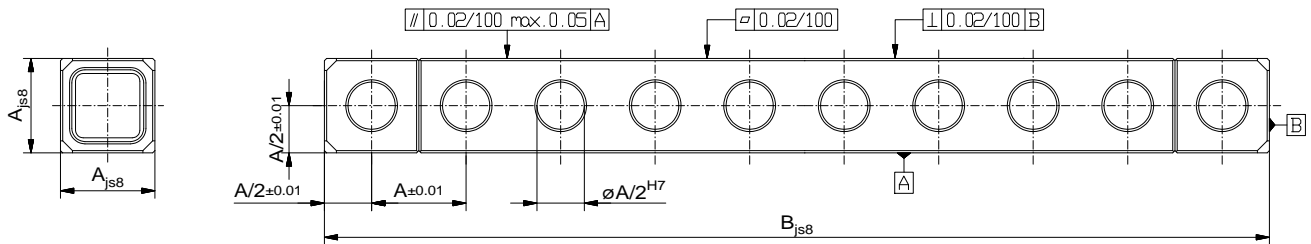


ALUFIX CLASSIC bars can be anodized in different colours. The colour natural is standard, black (-1) is available as an alternative. Other colours on request

Other dimensions on request

ALUFIX CLASSIC

Light Bar one row



AF25 Light CLASSIC

One row bar 25x25

Grid (A) 25, hole diameter 12,5mm

Nr.	B	g
24340	50	34
25013	100	69
25374	150	103
24336	200	138
22946	250	172
24337	300	206
25012	350	241
23283	400	275
25890	450	310
22947	500	344
25894	550	378
21333	600	413
24338	650	447
24339	700	482
21709	750	516
24189	800	550
27470	850	585
25895	900	619
27473	950	654
22948	1000	688
27605	1050	722
24190	1100	757
33282	1150	791
24191	1200	826
21749	1250	860
24188	1300	895
33283	1350	929
24187	1400	963
31855	1450	998
21189	1500	1.032
33284	1600	1.101
33285	1700	1.170
24395	1800	1.238
33286	1900	1.307
23334	2000	1.376

AF40 Light CLASSIC

One row bar 40x40

Grid (A) 40, hole diameter 20mm

Nr.	B	g
25039	120	221
25377	160	294
26505	200	368
25378	240	441
27342	280	514
25379	320	588
27183	360	661
23549	400	735
24945	440	809
25945	480	882
25951	520	956
26611	560	1.029
27444	600	1.103
33296	640	1.176
26612	680	1.250
28465	720	1.323
32702	760	1.397
23550	800	1.470
26610	840	1.544
26613	880	1.617
26685	920	1.691
27445	960	1.764
24495	1000	1.838
26686	1080	1.985
27559	1160	2.132
23551	1200	2.206
24453	1400	2.570
23552	1600	2.941
25033	1800	3.308
31855	1450	3.381
23553	2000	3.676
23554	2400	4.411
23555	2800	5.146
23556	3200	5.882
23557	3600	6.617
23558	4000	7.352
28035	4400	8.087
28036	4800	8.822

AF50 Light CLASSIC

One row bar 50x50

Grid (A) 50, hole diameter 25mm

Nr.	B	g
28149	50	165
28150	100	330
28151	150	495
28152	200	660
28153	250	825
28154	300	990
28156	350	1.155
28155	400	1.320
28157	450	1.485
26933	500	1.650
28615	600	1.990
28495	700	2.310
33297	800	2.240
32654	900	2.985
26935	1000	3.328
28939	1100	3.630
33298	1200	3.960
27693	1300	4.290
33299	1400	4.648
26937	1500	4.950
28618	1600	5.335
33300	1700	5.638
30012	1800	5.940
33301	1900	6.313
26939	2000	6.600
26941	2500	8.100
26943	3000	9.800
26945	3500	11.400
26947	4000	13.000
26949	4500	14.700
26951	5000	16.300
26953	5500	17.900
26955	6000	19.500

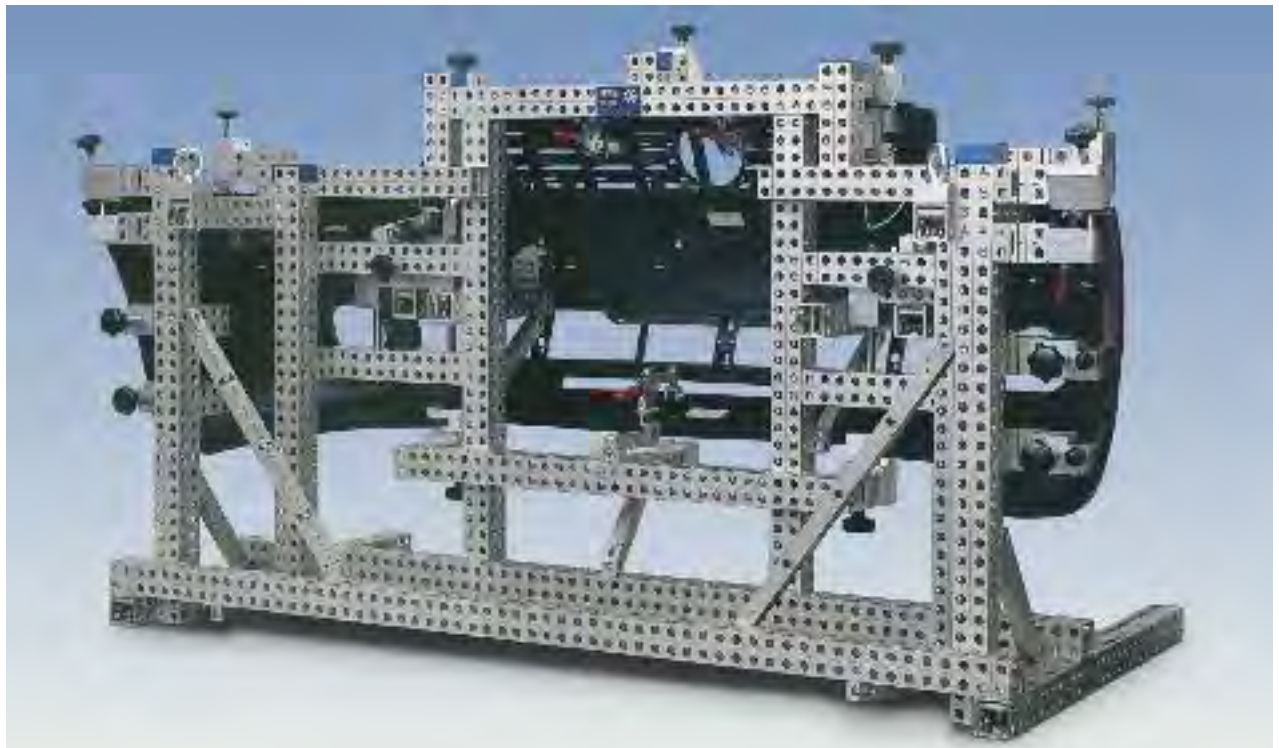
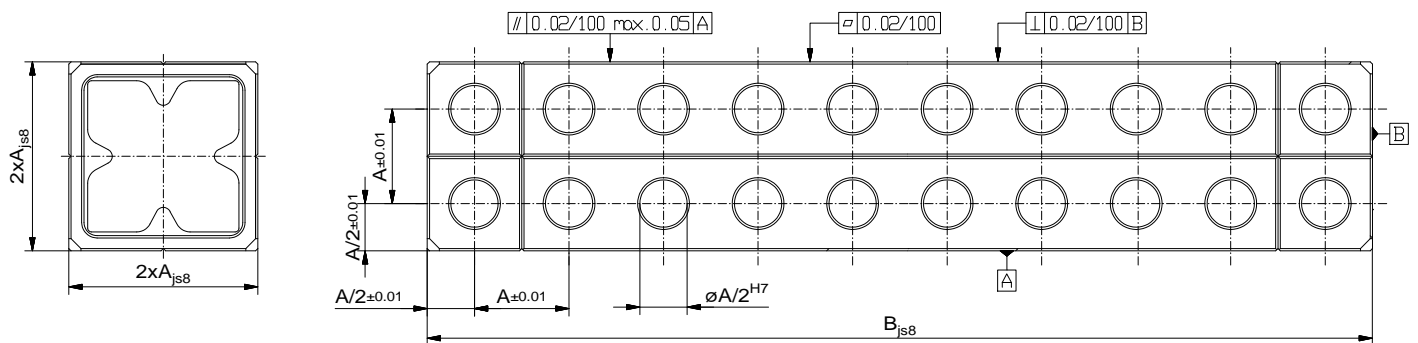


ALUFIX CLASSIC bars can be anodized in different colours. The colour natural is standard, black (-1) is available as an alternative. Other colours on request

i Other dimensions on request

ALUFIX CLASSIC

Light Bar two row



AF25 Light CLASSIC

Two row bar 50x50

Grid (A) 25, hole diameter 12,5mm

Nr.	B	g
26617	50	108
25375	100	215
20426	150	323
20427	200	430
22949	250	538
20254	300	645
24246	350	753
20256	400	860
24248	450	968
22950	500	1.075
24249	550	1.183
24250	600	1.290
24247	650	1.398
24251	700	1.505
21824	750	1.613
28353	800	1.720
26842	850	1.828
24319	900	1.935
26841	950	2.043
22951	1000	2.150
27632	1050	2.258
27633	1100	2.365
26849	1150	2.473
25025	1200	2.580
21825	1250	2.688
27914	1300	2.795
28354	1350	2.903
27915	1400	3.010
24813	1450	3.118
22952	1500	3.225
27891	1600	3.440
33287	1700	3.655
33288	1800	3.870
33289	1900	4.085
21226	2000	4.300

AF40 Light CLASSIC

Two row bar 80x80

Grid (A) 40, hole diameter 20mm

Nr.	B	g
24393	80	407
24940	120	610
23937	160	813
23938	200	1.017
24392	240	1.220
24825	280	1.423
24641	320	1.627
24809	360	1.830
23559	400	2.033
25922	440	2.237
24390	480	2.440
24808	520	2.643
24389	560	2.846
24451	600	3.050
24391	640	3.253
24454	680	3.456
24388	720	3.660
24826	760	3.863
23560	800	4.066
24629	840	4.270
26609	880	4.473
25095	920	4.676
25877	960	4.880
24624	1000	5.083
24807	1080	5.490
24943	1120	5.693
23561	1200	6.100
25317	1240	6.303
24806	1280	6.506
26003	1320	6.710
25094	1400	7.116
24630	1520	7.726
23562	1600	8.133
27202	1680	8.539
25629	1760	8.946
23562	1840	9.353
27202	1920	9.759
25629	2000	10.166

AF50 Light CLASSIC

Two row bar 100x100

Grid (A) 50, hole diameter 25mm

Nr.	B	g
27569	100	839
28122	150	1.258
26735	200	1.678
27504	250	2.097
26821	300	2.516
27607	350	2.936
26786	400	3.355
26820	450	3.775
26787	500	4.194
26788	600	5.033
26818	700	5.872
27505	800	6.710
26789	900	7.549
26957	1000	8.388
27610	1100	9.227
27920	1200	10.066
27611	1300	10.904
27919	1400	11.743
26959	1500	12.582
27923	1600	13.421
30752	1700	14.260
27460	1800	15.098
30959	1900	15.937
26961	2000	16.767
26963	2500	20.970
26965	3000	25.164
26967	3500	29.358
26969	4000	33.552
26971	4500	37.746
26973	5000	41.940
26975	5500	46.134
26977	6000	50.328



i **ALUFIX CLASSIC** bars can be anodized in different colours. The colour natural is standard, black (-1) is available as an alternative. Other colours on request

i Other dimensions on request

AF25 Light CLASSIC

Three row bar 75x75

Grid (A) 25, hole diameter 12,5mm

Nr.	B	g
24882	100	343
25075	150	514
25376	200	686
22617	250	857
25076	300	1.029
26002	350	1.200
27412	400	1.372
25078	450	1.543
22618	500	1.715
33091	550	1.886
33090	600	2.057
32352	650	2.229
33041	700	2.400
22619	750	2.572
31538	800	2.743
32350	850	2.915
27223	900	3.086
26894	950	3.258
22621	1000	3.429
33551	1050	3.600
25080	1100	3.772
29685	1150	3.943
30751	1200	4.115
22623	1250	4.286
27855	1300	4.458
33050	1350	4.629
33060	1400	4.801
33552	1450	4.972
22624	1500	5.144
33290	1600	5.486
33089	1700	5.829
33291	1800	6.172
33292	1900	6.515
22771	2000	6.858

AF40 Light CLASSIC

Three row bar 120x120

Grid (A) 40, hole diameter 20mm

Nr.	B	g
24950	160	1.404
25123	200	1.755
24951	240	2.106
24827	280	2.457
24952	320	2.808
25122	360	3.159
23574	400	3.510
25735	440	3.861
24931	480	4.212
26008	520	4.563
25121	560	4.914
25124	600	5.265
25736	640	5.616
27458	680	5.967
24930	720	6.318
24828	760	6.669
23575	800	7.020
25029	840	7.371
25843	880	7.722
27597	920	8.073
24929	960	8.424
27435	1000	8.775
25028	1080	9.477
27169	1160	10.179
23576	1200	10.530
27601	1280	11.232
26892	1360	11.934
24953	1400	12.285
24829	1480	12.987
25310	1560	13.689
23577	1600	14.040
25950	1680	14.742
29918	1760	15.444
25737	1800	15.795
27538	1880	16.497
23578	2000	17.550
27602	2200	19.305

AF50 Light CLASSIC

Three row bar 150x150

Grid (A) 50, hole diameter 25mm

Nr.	B	g
28123	100	1.389
28124	150	2.083
28125	200	2.777
27521	250	3.472
26817	300	4.166
28126	350	4.860
28127	400	5.554
27854	450	6.249
26978	500	6.943
33302	600	8.332
27522	700	9.720
29366	800	11.109
27853	900	12.497
26979	1000	13.886
33303	1100	15.275
33304	1200	16.663
29805	1300	18.052
29699	1400	19.440
26981	1500	20.829
33305	1600	22.218
28557	1700	23.606
27606	1800	24.995
33306	1900	26.383
26983	2000	27.772
26985	2500	34.715
26987	3000	41.658
26989	3500	48.601
26991	4000	55.544
26993	4500	62.487
26995	5000	69.430
26997	5500	76.373
26999	6000	83.316

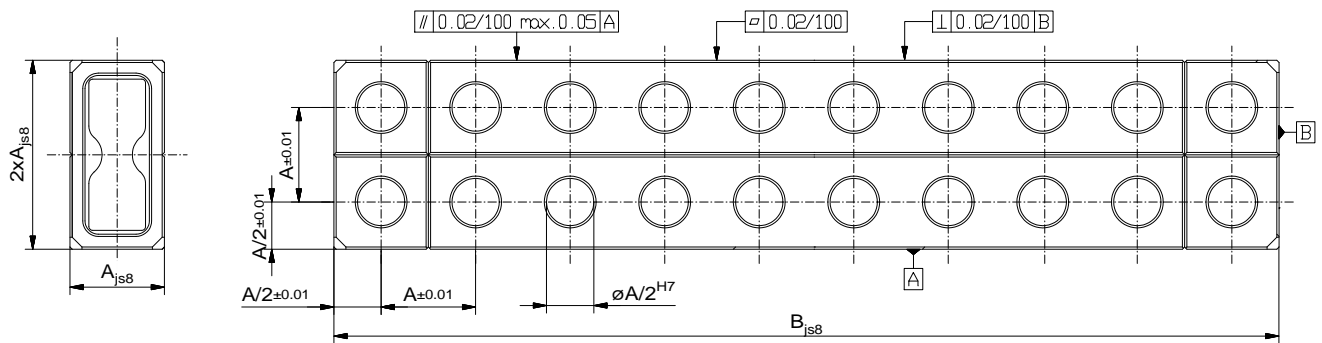


i **ALUFIX CLASSIC** bars can be anodized in different colours. The colour natural is standard, black (-1) is available as an alternative. Other colours on request

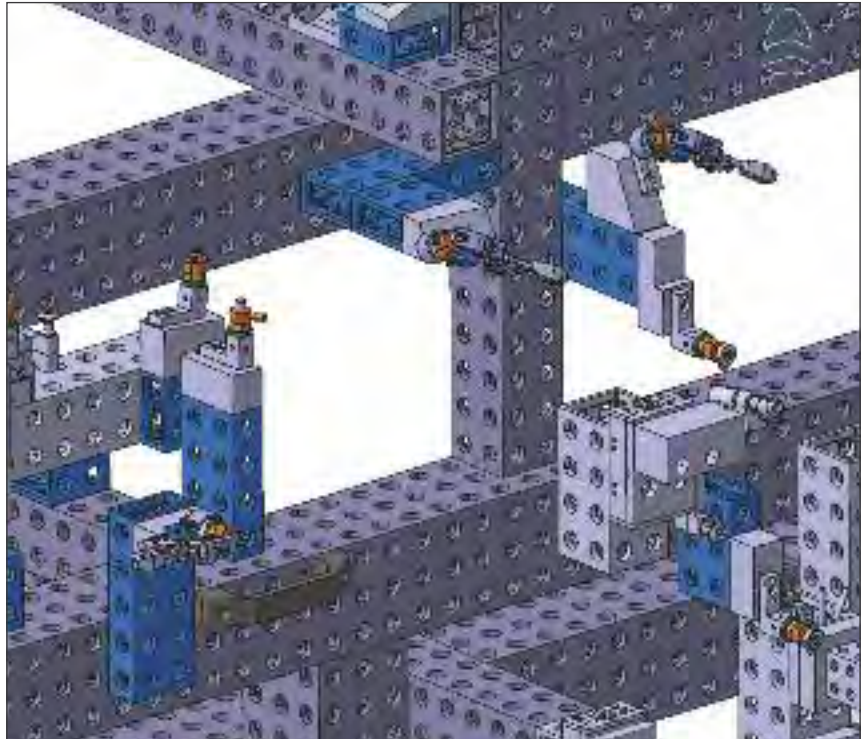
i Other dimensions on request

ALUFIX CLASSIC

Light Bar rectangular



Fixture with
rectangular Light Bars



AF25 Light CLASSIC

Rectangular bar 25x50

Grid (A) 25, hole diameter 12,5mm

Nr.	B	g
55090	50	68
55091	100	136
55092	150	204
55093	200	272
55094	250	340
55095	300	408
55096	350	476
55097	400	544
55098	450	612
55099	500	680
55100	550	748
55101	600	816
55102	650	884
55103	700	952
55104	750	1.020
55105	800	1.088
55106	850	1.156
55107	900	1.224
55108	950	1.292
55109	1000	1.360
55110	1050	1.428
55111	1100	1.496
55112	1150	1.564
55113	1200	1.632
55114	1250	1.700
55115	1300	1.768
55116	1350	1.836
55117	1400	1.904
55118	1450	1.972
55119	1500	2.040
55120	1550	2.108
55121	1600	2.176
55122	1650	2.244
55123	1700	2.312
55124	1750	2.380
55125	1800	2.448
55126	1850	2.516
55127	1900	2.584
55129	2000	2.720

AF40 Light CLASSIC

Rectangular bar 40x80

Grid (A) 40, hole diameter 20mm

Nr.	B	g
57400	80	286
57401	120	428
57402	160	571
57403	200	714
57404	240	857
57405	280	1.000
57406	320	1.142
57407	360	1.285
57408	400	1.428
57409	440	1.571
57410	480	1.714
57411	520	1.856
57412	560	1.999
57413	600	2.142
57414	640	2.285
57415	680	2.428
57416	720	2.570
57417	760	2.713
57418	800	2.856
57419	840	2.999
57420	880	3.142
57421	920	3.284
57422	960	3.427
57423	1000	3.570
57424	1040	3.713
57425	1080	3.856
57426	1120	3.998
57427	1160	4.141
57428	1200	4.284
57429	1240	4.427
57430	1280	4.570
57431	1320	4.712
57432	1360	4.855
57433	1400	4.998
57434	1440	5.141
57435	1480	5.284
57436	1520	5.426
57437	1560	5.569
57438	1600	5.712

AF40 Light CLASSIC

Rectangular bar 40x80

Grid (A) 40, hole diameter 20mm

Nr.	B	g
57439	1640	5.855
57440	1680	5.998
57441	1720	6.140
57442	1760	6.283
57443	1800	6.426
57444	1840	6.569
57445	1880	6.712
57446	1920	6.854
57447	1960	6.997
57448	2000	7.140
57449	2040	7.283
57450	2080	7.426
57451	2120	7.568
57452	2160	7.711
57453	2200	7.854
57454	2240	7.997
57455	2280	8.140
57456	2320	8.282
57457	2360	8.425
57458	2400	8.568
57459	2440	8.711
57460	2480	8.854
57461	2520	8.996
57462	2560	9.139
57463	2600	9.282
57464	2640	9.425
57465	2680	9.568
57466	2720	9.710
57467	2760	9.853
57468	2800	9.996
57469	2840	10.139
57470	2880	10.282
7471	2920	10.424
57472	2960	10.567
57473	3000	10.710



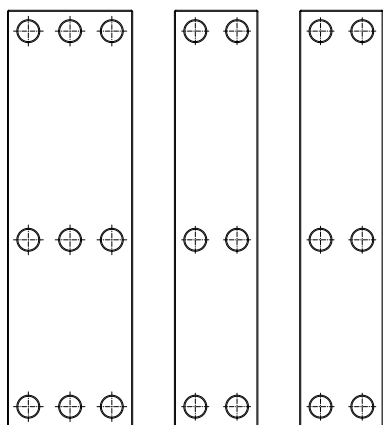
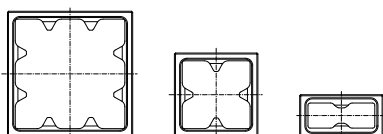
i **ALUFIX CLASSIC** bars can be anodized in different colours. The colour natural is standard, black (-1) is available as an alternative. Other colours on request

i Other dimensions on request

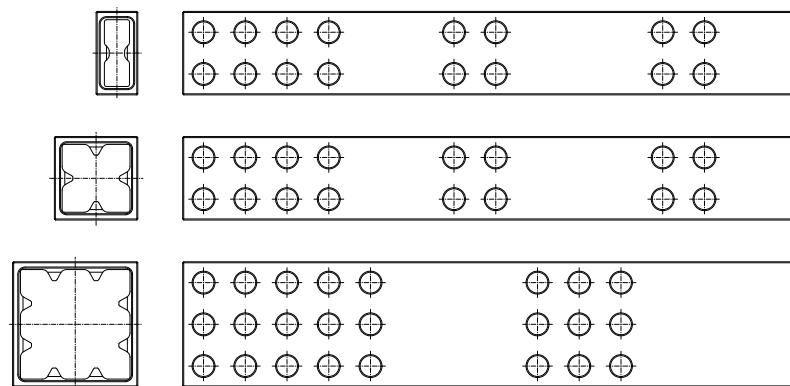
ALUFIX CLASSIC Light Bar CX/SX

Alufix Light bars CS/SX with reduced number of drilled holes are an economical alternative to normal Light bars.

Alufix Light bars CX/SX are available on request in the same dimensions as normal Light bars, pages 20-27.



Light bars CX: For column type design with one row of holes at each end. With further rows of one hole to mount struts depending on the length



Light bar SX: Version with dedicated areas of holes



i ALUFIX CLASSIC bars can be anodized in different colours. The colour natural is standard, black (-1) is available as an alternative. Other colours on request

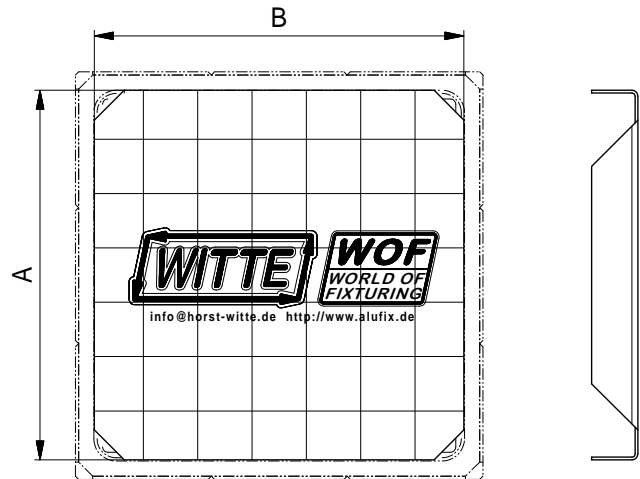
i Light bars CX/SX are also available in ECO version, see page 195. Other dimensions on request

ALUFIX CLASSIC

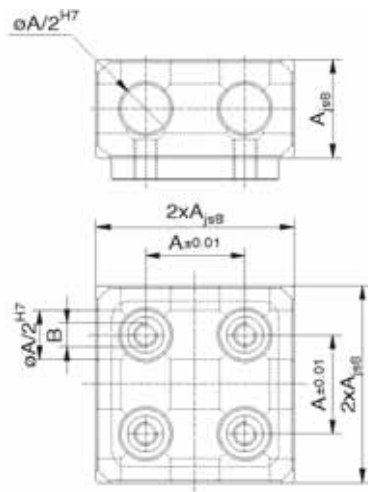
Blind covers

metallic blind covers for Light Bars

Nr.	System	A	B	g
56494	AF 25	25	25	1
56495	AF 25	25	50	1
51041	AF 25	50	50	4
51042	AF 25	75	75	1
52315	AF 40	40	40	3
54598	AF 40	40	80	6
51043	AF 40	80	80	13
122401	AF 40	80	120	20
51044	AF 40	120	120	50
54599	AF 50	50	50	9
51045	AF 50	100	100	20
51046	AF 50	150	150	77



ALUFIX CLASSIC blind covers can be anodized in different colours. The colour natural is standard, black (-1) is available as an alternative. Other colours on request

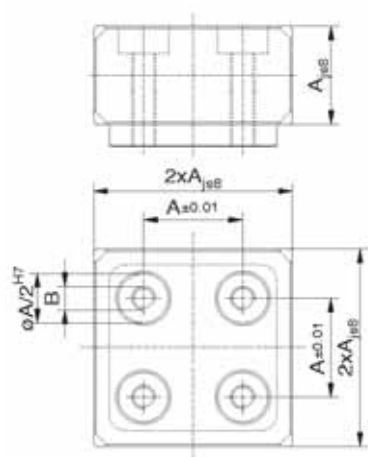


Coupling plate, universal

For Light bars

Nr.	AF	A	B	
332856	25	25	M6	134
332857	40	40	M10	550
332858	50	50	M12	940

Recommended for face end connections of quick change couplings and guiding, roller slides



Coupling plate

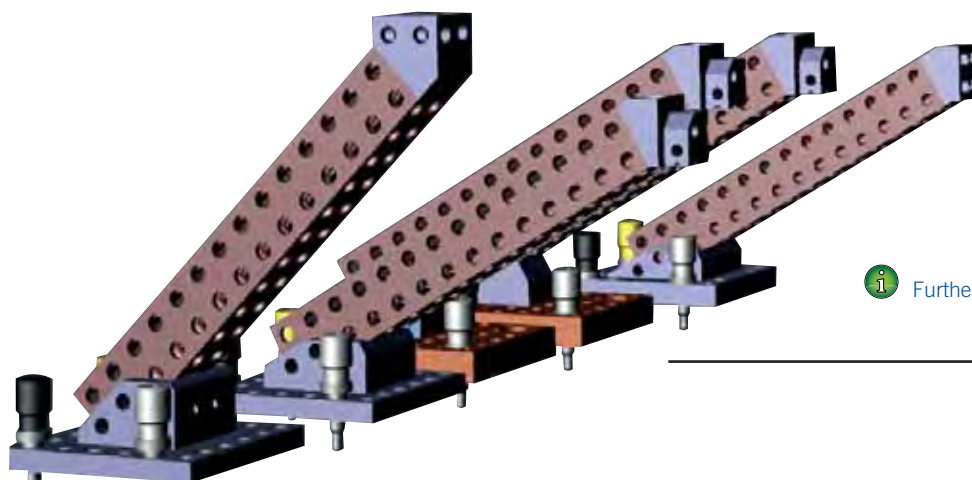
For Light bars

Nr.	AF	A	B	
333626	25	25	M6	141
333627	40	40	M10	578
333628	50	50	M12	987



Foot plates and end blocks

For setting up diagonal columns

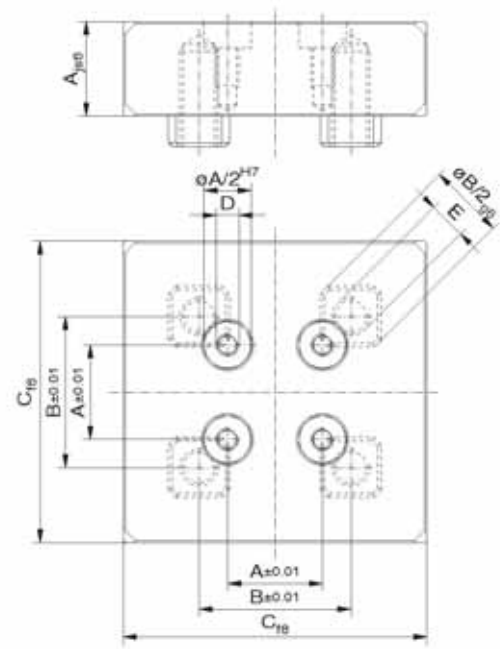


Further information on request

Reducer plate

from 2 hole to 1 hole bar

Nr.	A	B	C	D	E	
395733	25	40	80	M6	M10	420
51381A	25	50	100	M6	M12	440



Reducer plate

from Alufix 50 to Alufix 25

Nr.	A	B	C	D	E	
51381	25	50	100	M6	M12	650

